

*Community Health Needs Assessment
2016*



Contents

Consultants' Report.....	1
Introduction.....	2
Summary of Community Health Needs Assessment.....	3
General Description of Medical Center	4
Mission Statement	4
Vision Statement	4
Values	4
Evaluation of Prior Needs Identified and Actions Taken	5
Chronic Obstructive Pulmonary Disease (COPD)	5
Heart Disease.....	5
Motor Vehicle Accidents.....	5
Alcohol and Substance Related Abuse.....	6
Summary of Findings and Needs in Current Year Assessment	6
Identified Community Health Needs	6
Community Served by the Medical Center	7
Defined Community	7
Community Details	9
Identification and Description of Geographical Community	9
Community Population and Demographics.....	10
Socioeconomic Characteristics of the Community	12
Income and Employment.....	12
Unemployment Rate	14
Poverty.....	15
Uninsured	16
Medicaid.....	16
Education.....	17
Physical Environment of the Community	18
Grocery Store Access	18
Food Access/Food Deserts	19
Recreation and Fitness Facility Access	19

Clinical Care of the Community.....	20
Access to Primary Care	20
Lack of a Consistent Source of Primary Care	21
Population Living in a Health Professional Shortage Area	21
Preventable Hospital Events.....	22
Health Status of the Community	23
Leading Causes of Death.....	24
Health Outcomes and Factors	25
Diabetes	32
High Cholesterol.....	32
Heart Disease.....	33
High Blood Pressure.....	33
Obesity.....	34
Poor Dental Health	34
Poor General Health	35
Low Birth Weight.....	35
Key Informant Interviews.....	36
Methodology.....	36
Key Informant Profiles.....	37
Key Informant Interview Results	37
Health Issues of Vulnerable Populations	39
Information Gaps.....	40
Prioritization of Identified Health Needs.....	41
Health Care Resources	44
Hospitals and Health Centers	44
Other Health Care Facilities and Providers	45
Appendices	
Acknowledgements	46
Sources	47
Analysis of Data	48
Key Informant Interview Protocol.....	52
Dignity Health CNI Reports.....	55
County Health Rankings.....	61

Consultants' Report

Mr. Ed Clayton
President, Chief Executive Officer
Phelps County Regional Medical Center

On behalf of Phelps County Regional Medical Center (PCRMC), we have assisted in conducting a Community Health Needs Assessment (CHNA) consistent with the scope of services outlined in our engagement letter dated May 7, 2015. The purpose of our engagement was to assist PCRMC in meeting the requirements of Internal Revenue Code §501(r)(3). We relied on the guidance contained in IRS Notice 2011-52 when preparing your report. We also relied on certain information provided by PCRMC, specifically certain utilization data, geographic HPSA information, and existing community health care resources.

Based upon the assessment procedures performed, it appears PCRMC is in compliance with the provisions of §501(r)(3). Please note that, we were not engaged to, and did not, conduct an examination, the objective of which would be the expression of an opinion on compliance with the specified requirements. Accordingly, we do not express such an opinion.

We used and relied upon information furnished by PCRMC, its employees and representatives and on information available from generally recognized public sources. We are not responsible for the accuracy and completeness of the information and are not responsible to investigate or verify it.

These findings and recommendations are based on the facts as stated and existing laws and regulations as of the date of this report. Our assessment could change as a result of changes in the applicable laws and regulations. We are under no obligation to update this report if such changes occur. Regulatory authorities may interpret circumstances differently than we do. Our services do not include interpretation of legal matters.

BKD, LLP

September 21, 2016

Introduction

Internal Revenue Code (IRC) Section 501(r) requires health care organizations assess the health needs of their communities and adopt implementation strategies to address identified needs. Per IRC Section 501(r), a byproduct of the *Affordable Care Act*, to comply with federal tax-exemption requirements, a tax-exempt hospital facility must:

- ✓ Conduct a Community Health Needs Assessment every three years.
- ✓ Adopt an implementation strategy to meet the community health needs identified through the assessment.
- ✓ Report how it is addressing the needs identified in the Community Health Needs Assessment and a description of needs that are not being addressed with the reasons why such needs are not being addressed.

The Community Health Needs Assessment must take into account input from persons who represent the broad interest of the community served by the hospital, including those with special knowledge of or expertise in public health. The hospital must make the Community Health Needs Assessment widely available to the public.

This Community Health Needs Assessment, which describes both a process and a document, is intended to document Phelps County Regional Medical Center's compliance with IRC Section 501(r). Health needs of the Community have been identified and prioritized so that Phelps County Regional Medical Center (Medical Center) may adopt an implementation strategy to address specific needs of the Community.

The process involved:

- ✓ An evaluation of the Implementation Strategy for needs assessment completed in July 2013.
- ✓ Collection and analysis of a large range of data, including demographic, socioeconomic and health statistics, and health care resources.
- ✓ Interviews with key informants who represent a) broad interests of the Community, b) populations of need, or c) persons with specialized knowledge in public health.

This document is a summary of all the available evidence collected during the Community Health Needs Assessments conducted in tax year 2015. It will serve as a compliance document as well as a resource until the next assessment cycle. Both the process and document serve as the basis for prioritizing the Community's health needs and will aid in planning to meet those needs.

Summary of Community Health Needs Assessment

The purpose of the Community Health Needs Assessment is to understand the unique health needs of the Community served by the Phelps County Regional Medical Center and to document compliance with new federal laws outlined above.

The Medical Center engaged **BKD, LLP** to conduct a formal Community Health Needs Assessment. **BKD, LLP** is one of the largest CPA and advisory firms in the United States, with approximately 2,400 partners and employees in 34 offices. BKD serves more than 1,000 hospitals and health care systems across the country. The Community Health Needs Assessment was conducted from January 2016 through May 2016.

Based on current literature and other guidance from the treasury and the IRS, the following steps were conducted as part of The Medical Center's Community Health Needs Assessment:

- ✓ An evaluation of the impact of actions taken to address the significant health needs identified in the prior Community Health Needs Assessment was completed and an implementation strategy scorecard was prepared to understand the effectiveness of The Medical Center's current strategies and programs.
- ✓ The "Community" served by The Medical Center was defined by utilizing inpatient and outpatient data regarding patient origin. This process is further described in Community Served by the Medical Center.
- ✓ Population demographics and socioeconomic characteristics of the Community were gathered and reported utilizing various third parties (see references in Appendices). The health status of the Community was then reviewed. Information on the leading causes of death and morbidity information was analyzed in conjunction with health outcomes and factors reported for the Community by County Health Rankings. Health factors with significant opportunity for improvement were noted.
- ✓ Community input was provided through key informant interviews. Results and findings are described in the Key Informant section of this report.
- ✓ Information gathered in the steps above was analyzed and reviewed to identify health issues of uninsured persons, low-income persons and minority groups, and the Community as a whole. Health needs were ranked utilizing a weighting method that weighs: 1) the size of the problem, 2) the seriousness of the problem, 3) the prevalence of common themes, 4) the impact of the issue on vulnerable populations, and 5) how important the issue is to the Community.
- ✓ An inventory of health care facilities and other community resources potentially available to address the significant health needs identified through the CHNA was prepared and collaborative efforts were identified.

Health needs were then prioritized taking into account the perceived degree of influence the Medical Center has to impact the need and the health needs' impact on overall health for the Community. Information gaps identified during the prioritization process have been reported.

General Description of Medical Center

Phelps County Regional Medical Center has an over sixty-year history of serving the same community that originally came together to open Phelps County Memorial Hospital in 1951. The Medical Center is located in Rolla, Missouri. A five-member board of trustees governs the Medical Center and ensures that medical services are available to the residents of Rolla and surrounding areas.



Mission Statement

Provide every resident in our community the opportunity for optimal health through access to world-class, patient-centered healthcare delivered safely, efficiently and effectively, close to home.

Vision Statement

We will be our community's first choice of healthcare and medical services by providing world-class, patient-centered healthcare that promotes wellness, restores health, and relieves suffering swiftly, safely, and compassionately through responsible stewardship with integrity and innovation in the management of all available resources.

Values

Compassion, innovation, integrity and philanthropy are the organizational values that collectively form the cultural foundation on which the Medical Center's commitment to world-class healthcare is built.

Evaluation of Prior Needs Identified and Actions Taken

The Medical Center made progress in each of the priority areas during the last three years. Goals and strategies for each priority area are summarized below.

Priorities	Actions
Chronic Obstructive Pulmonary Disease (COPD)	<ol style="list-style-type: none"> 1. Engaged in Chronic Disease Management program in partnership with Arthritis Foundation and Stanford University providing over 20 courses to the PCRMC service area. 2. Telehealth provided to home health patients with COPD and corresponding co-morbidities on a case by case basis as identified by medical care team. 3. Internal and external provision of smoking cessation materials and education through various methods of delivery.
Heart Disease	<ol style="list-style-type: none"> 1. Heart to Heart Fund annually raise money for education and screenings to help those already affected by heart disease and those yet to be diagnosed. The initiative raises funds and community awareness. 2. Purchased mobile Defibrillators and provided user training for the surrounding schools and daycares in the service area of the Medical Center. 3. Educational Lunch and Learn sessions featuring Medical Staff members open to the public in our service area. 4. The Medical Staff has employed three cardiologists, including an expansion to provide interventional cardiology as well as an Advance Practice Nurse Practitioner.
Motor Vehicle Accidents	<ol style="list-style-type: none"> 1. Pit Crew Driving Training with the Rolla Fire and Police Departments instructing a systematic approach to providing care to a critical patient between the fire department and EMS. 2. Kids Safety Day annually during EMS Week involving several agencies to include MSHP, all police departments, EMS, Fire department, conservation, and poison control. Bike course given by MODOT where kids get a free helmet attracting 600 to 800 kids. 3. Docu-Drama Pre-Prom Program for the surrounding high schools. This event includes the simulation of a car crash in result of drinking or texting while driving.

Motor Vehicle Accidents (Continued)	<ol style="list-style-type: none"> 4. Annual and on-demand Vehicular Safety and Awareness to surrounding service area schools and daycares. 5. Community Partnership and Safety Coalition with Missouri Department of Transportation, MO Highway Patrol, local Fire and Police Departments and Health Departments. 6. Collaboration and Partnership with the City of Rolla Fire Department for car seat safety education, installation and safety checks.
Alcohol and Substance Related Abuse	<ol style="list-style-type: none"> 1. Support of Russell House, a local battered women’s shelter in efforts to educate and prevent physical abuse related to alcohol and substance abuse. 2. Partnership and collaboration with Prevention Consultants of Missouri, an area leader and provider of Alcohol and Substance Abuse education for all ages. 3. Kids First Child Abuse Awareness education provision to area law enforcement educators, social workers, and health care professionals. 4. Partnership with Your Community Health Center, a Federally Qualified Health Center providing among other services, mental health services to an underserved population. 5. Expansion of outpatient psychiatric services to meet the growing needs of the population in our Community. 6. Mental Health Support Group

Summary of Findings and Needs in Current Year Assessment

The following health needs were identified based on the information gathered and analyzed through the Community Health Needs Assessment conducted by the Medical Center. These identified community health needs are discussed in greater detail later in this report.

Identified Community Health Needs

- Adult Oral Health
- Mental Health
- Food & Nutrition

Community Served by the Medical Center

The Medical Center is located in Phelps County, Missouri, approximately one hour south of Jefferson City, Missouri and 1.5 hours southwest of St. Louis, Missouri, and is accessible by interstate and other secondary roads.

Defined Community

A community is defined as the geographic area from which a significant number of the patients utilizing hospital services reside. While the Community Health Needs Assessment considers other types of health care providers. The utilization of the Medical Center's services provides the clearest definition of the Community.

Based on the patient origin of acute care discharges from 09/01/2014 to 09/01/2015, management has identified the Community to include the corresponding counties for zip codes listed in *Exhibit 1*, with discharge percent of total greater than 3%.

Exhibit 1			
Phelps County Regional Medical Center			
Summary of Inpatient Discharges by Zip Code			
09/01/2014 to 09/01/2015			
Zip Code	City	Discharges	Percent Discharges
Phelps County			
65401	Rolla	2,604	32.0%
65559	Saint James	866	10.6%
65550	Newburg	226	2.8%
65402	Rolla	153	1.9%
65462	Edgar Springs	103	1.3%
65529	Jerome	14	0.2%
65461	Duke	13	0.2%
65436	Beulah	11	0.1%
65409	Rolla	1	0.0%
Total Phelps County		3,991	49.1%
Pulaski County			
65459	Dixon	410	5.0%
65583	Waynesville	331	4.1%
65584	Saint Robert	270	3.3%
65452	Crocker	69	0.9%
65556	Richland	43	0.5%
65534	Laquey	36	0.4%
65473	Fort Leonard Wood	24	0.3%
65457	Devils Elbow	10	0.1%
Total Pulaski County		1,193	14.6%

Zip Code	City	Discharges	Percent Discharges
Dent County			
65560	Salem	861	10.6%
65440	Boss	22	0.3%
65501	Jadwin	12	0.2%
65541	Lenox	4	0.0%
65532	Lake Spring	3	0.0%
Total Dent County		902	11.1%
Crawford County			
65453	Cuba	277	3.4%
65565	Steelville	178	2.2%
63080	Sullivan	46	0.6%
65441	Bourbon	44	0.5%
65535	Leasburg	18	0.2%
65449	Cook Station	16	0.2%
65456	Davisville	13	0.2%
65446	Cherryville	7	0.1%
Total Crawford County		599	7.4%
Texas County			
65542	Licking	224	2.8%
65483	Houston	50	0.6%
65552	Plato	37	0.5%
65571	Summersville	15	0.2%
65555	Raymondville	10	0.1%
65444	Bucyrus	8	0.1%
65689	Cabool	7	0.1%
65557	Roby	4	0.0%
65479	Hartshorn	3	0.0%
65464	Elk Creek	1	0.0%
65468	Eunice	1	0.0%
65570	Success	1	0.0%
Total Texas County		361	4.4%
Maries County			
65013	Belle	115	1.4%
65582	Vienna	105	1.3%
65580	Vichy	66	0.8%
65443	Brinktown	1	0.0%
Total Maries County		287	3.5%
All Other Counties		804	9.9%
Inpatient Discharges Total		8,137	100.0%

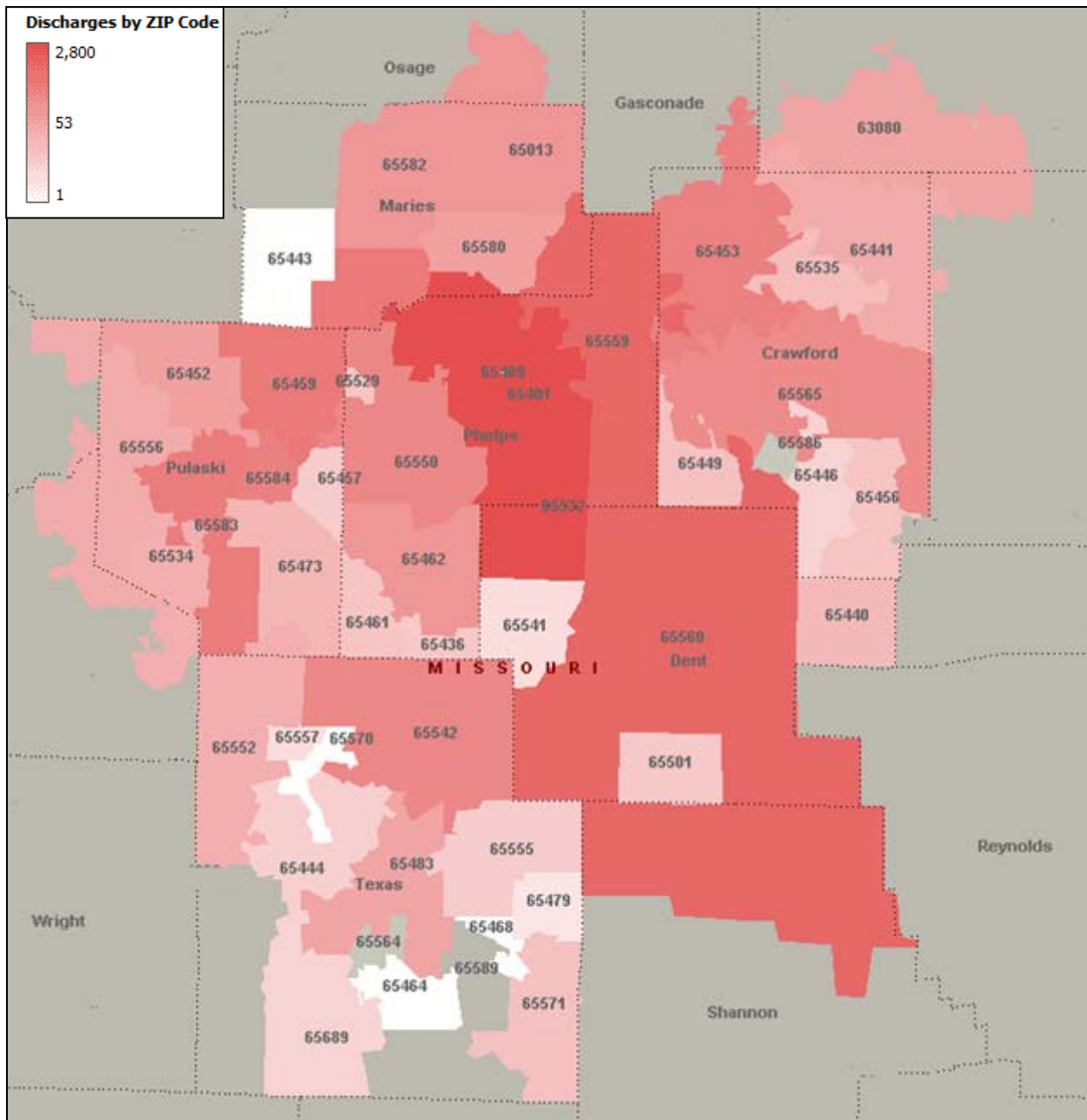
Source: Phelps County Regional Medical Center

Community Details

Identification and Description of Geographical Community

The geographic area of the defined Community, based on the identified zip codes, includes Crawford, Dent, Maries, Phelps, Pulaski, and Texas counties (Community). The Community Health Needs Assessment will utilize these six counties with all or significant portions included in the Community. The following map illustrates the geographic area, with discharges by zip codes.

Phelps County Regional Medical Center Community



Community Population and Demographics

The U.S. Bureau of Census has compiled population and demographic data based on the American Community Survey 2010-14 5-year estimates. *Exhibit 2* below shows the total population of the Community. It also provides the breakout of the Community between male and female population, age, race/ethnicity, and Hispanic population.

Exhibit 2									
Demographic Snapshot									
Phelps County Regional Medical Center Community									
DEMOGRAPHIC CHARACTERISTICS (as of 2014)									
Total Population					Population by Gender				
County	Population				County	Male		Female	
Crawford County	24,680				Crawford County	12,155		12,525	
Dent County	15,681				Dent County	7,783		7,898	
Maries County	9,098				Maries County	4,498		4,600	
Phelps County	45,091				Phelps County	23,512		21,579	
Pulaski County	53,343				Pulaski County	30,097		23,246	
Texas County	25,796				Texas County	13,219		12,577	
Total Community	173,689				Total Community	91,264		82,425	
Missouri	6,028,076				Missouri	2,953,719		3,074,357	
United States	314,107,084				United States	154,515,159		159,591,925	
Age Distribution									
Age Group	Crawford	% of Total	Dent	% of Total	Maries	% of Total	Phelps	% of Total	
0 - 4	1,603	6.5%	963	6.1%	539	5.9%	2,650	5.9%	
5 - 19	4,855	19.7%	2,996	19.1%	1,715	18.9%	9,113	20.2%	
20 - 24	1,350	5.5%	849	5.4%	499	5.5%	5,794	12.8%	
25 - 34	2,896	11.7%	1,617	10.3%	952	10.5%	5,556	12.3%	
35 - 44	2,814	11.4%	1,699	10.8%	987	10.8%	4,601	10.2%	
45 - 54	3,683	14.9%	2,376	15.2%	1,371	15.1%	5,755	12.8%	
55 - 64	3,269	13.2%	2,134	13.6%	1,293	14.2%	5,182	11.5%	
65+	4,210	17.1%	3,047	19.4%	1,742	19.1%	6,440	14.3%	
Total	24,680	100.0%	15,681	100.0%	9,098	100.0%	45,091	100.0%	
Age Distribution									
Age Group	Pulaski	% of Total	Texas	% of Total	Community	% of Total	Missouri	% of Total	
0 - 4	4,051	7.6%	1,565	6.1%	11,371	6.5%	379,273	6.3%	
5 - 19	13,556	25.4%	4,684	18.2%	36,919	21.3%	1,195,267	19.8%	
20 - 24	7,259	13.6%	1,790	6.9%	17,541	10.1%	424,606	7.0%	
25 - 34	9,464	17.7%	2,835	11.0%	23,320	13.4%	792,560	13.1%	
35 - 44	6,080	11.4%	2,841	11.0%	19,022	11.0%	735,511	12.2%	
45 - 54	5,251	9.8%	3,667	14.2%	22,103	12.7%	854,632	14.2%	
55 - 64	3,882	7.3%	3,629	14.1%	19,389	11.2%	763,675	12.7%	
65+	3,800	7.1%	4,785	18.5%	24,024	13.8%	882,552	14.6%	
Total	53,343	100.0%	25,796	100.0%	173,689	100.0%	6,028,076	100.0%	
Race / Ethnicity									
County	White	Black	Asian	All Other	Total Non-Hispanic	Hispanic			
Crawford County	23,733	65	36	450	24,284	396			
Dent County	14,923	76	68	424	15,491	190			
Maries County	8,782	27	45	149	9,003	95			
Phelps County	40,323	1,004	1,462	1,266	44,055	1,036			
Pulaski County	37,820	5,728	1,431	3,048	48,027	5,316			
Texas County	23,650	648	17	992	25,307	489			
Total Community	149,231	7,548	3,059	6,329	166,167	7,522			
Percentage	85.92%	4.35%	1.76%	3.64%	95.67%	4.33%			
Missouri	4,851,262	690,115	100,628	159,683	5,801,688	226,388			
Percentage	80.48%	11.45%	1.67%	2.65%	96.24%	3.76%			
United States	197,159,492	38,460,598	15,536,209	9,880,689	261,036,988	53,070,096			
% of Community	62.77%	12.24%	4.95%	3.15%	83.10%	16.90%			

Note: Totals might not foot due to rounding

Source: US Census Bureau, American Community Survey, 2010-14.

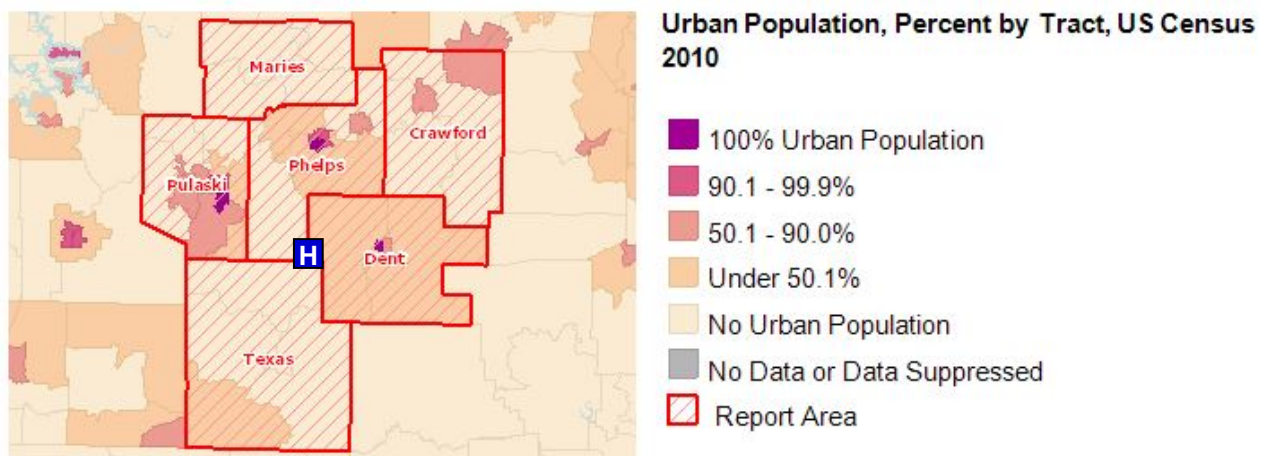
The age category that utilizes health care services the most, 65 years and over, is an estimated 13.8% percent of the population in the six county Community. The number of persons age 65 or older is relevant because this population has unique health needs, which should be considered separately from other age groups.

While the relative age of the Community population can influence community health needs, so can the ethnicity and race of a population. The population of the Community by race and ethnicity illustrates different categories such as, White, Black, Asian, Hispanic, and other.

Exhibit 3 reports the percentage of population living in urban and rural areas. Urban areas are identified using population density, count, and size thresholds. Urban areas also include territory with a high degree of impervious surface (development). Rural areas are all areas that are not urban. This table helps to understand how access to care can be limited.

Exhibit 3 Phelps County Regional Medical Center Urban/Rural Population				
County	Urban Population	Rural Population	Percent Urban	Percent Rural
Crawford County	6,592	18,104	26.7%	73.3%
Dent County	4,921	10,736	31.4%	68.6%
Maries County	0	9,176	0.0%	100.0%
Phelps County	24,283	20,873	53.8%	46.2%
Pulaski County	29,257	23,017	56.0%	44.0%
Texas County	205	25,803	0.8%	99.2%
Total Community	65,258	107,709	37.7%	62.3%
Missouri	4,218,371	1,770,556	70.4%	29.6%
United States	249,253,271	59,492,267	80.7%	19.3%

Source: US Census Bureau, Decennial Census. 2010.



Source: US Census Bureau, Decennial Census. 2010.

Socioeconomic Characteristics of the Community

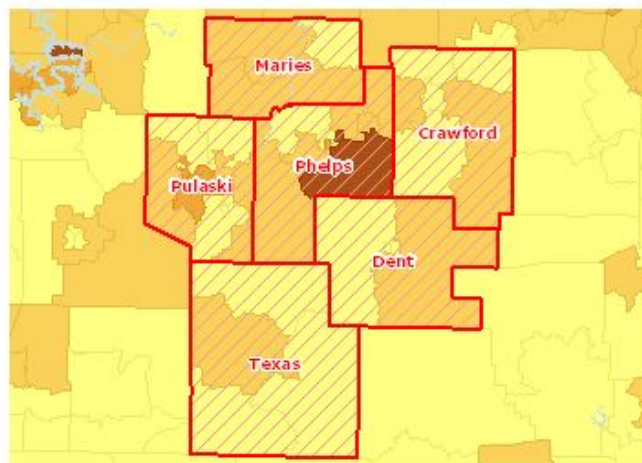
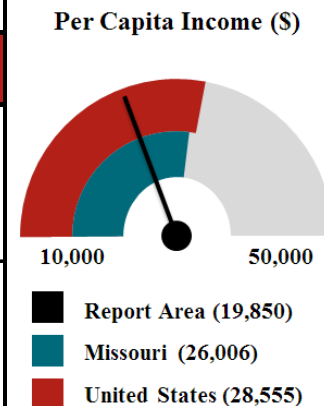
The socioeconomic characteristics of a geographic area influence the way residents access health care services and perceive the need for health care services within society. The economic status of an area may be assessed by examining multiple variables within the community. The following exhibits are a compilation of data that includes household per capita income, employment rates, uninsured population poverty and educational attainment for the Community. These standard measures will be used to compare the socioeconomic status of the Community to the State of Missouri and the United States.

Income and Employment

Exhibit 4 presents the per capita income for the Community. This includes all reported income from wages and salaries as well as income from self-employment, interest or dividends, public assistance, retirement, and other sources. The per capita income in this exhibit is the average (mean) income computed for every man, woman, and child in the specified area. None of the counties within the Community has a per capita income above the State of Missouri and the United States.

Exhibit 4 Phelps County Regional Medical Center Per Capita Income (In 2014 Inflation Adjusted USD)			
	Total Population	Aggregate Household Income (\$)	Per Capita Income (\$)
Crawford County	24,680	\$ 453,723,100	\$ 19,099
Dent County	15,681	\$ 289,195,900	\$ 19,589
Maries County	9,098	\$ 188,427,300	\$ 21,316
Phelps County	45,091	\$ 897,927,200	\$ 20,900
Pulaski County	53,343	\$ 893,046,200	\$ 20,019
Texas County	25,796	\$ 437,239,100	\$ 18,178
Total Community	173,689	\$ 3,159,558,800	\$ 19,850
Missouri	6,028,076	\$ 152,779,146,900	\$ 26,006
United States	314,107,084	\$ 8,668,939,696,400	\$ 28,555

Source: US Census Bureau, American Community Survey, 2010-14.



Per Capita Income by Tract, ACS 2009-13

- Over 30,000
- 25,001 - 30,000
- 20,001 - 25,000
- Under 20,001
- No Data or Data Suppressed
- Report Area

Source: US Census Bureau, American Community Survey, 2010-14.

According to research of the Community area, Crawford, Dent, Maries, Phelps, Pulaski, and Texas counties are supported by major industries including local federal, state, and local government. *Exhibit 5* summarizes employment by major industry for the six counties, while *Exhibit 6* shows the top 10 employers by county.

Exhibit 5 Phelps County Regional Medical Center Community Employment by Major Industry 2014 Annual Average (In Thousands)																
Major Industries	Crawford County	%	Dent County	%	Maries County	%	Phelps County	%	Pulaski County	%	Texas County	%	Community Total	%	Missouri %	US %
Government																
Federal Government	33	0.5%	57	1.5%	11	0.9%	349	2.0%	3,600	27.3%	66	1.2%	4,116	8.6%	2.0%	2.0%
State Government	99	1.5%	105	2.8%	24	2.0%	2,112	12.2%	103	0.8%	568	10.0%	3,011	6.3%	3.4%	3.3%
Local Government	805	12.5%	790	20.7%	312	26.2%	3,031	17.5%	2,091	15.8%	1,294	22.8%	8,323	17.5%	10.3%	10.1%
Goods-producing																
Natural resources and mining	30	0.5%	21	0.6%	-	0.0%	25	0.1%	-	0.0%	48	0.8%	124	0.3%	0.6%	1.5%
Construction	209	3.2%	127	3.3%	-	0.0%	522	3.0%	440	3.3%	170	3.0%	1,468	3.1%	4.1%	4.5%
Manufacturing	2,011	31.3%	338	8.9%	183	15.4%	996	5.7%	-	0.0%	780	13.7%	4,308	9.0%	9.6%	8.9%
Service-providing																
Trade, transportation and utilities	963	15.0%	902	23.7%	297	25.0%	4,248	24.5%	1,970	14.9%	1,237	21.8%	9,617	20.2%	19.6%	19.1%
Information	65	1.0%	42	1.1%	-	0.0%	175	1.0%	108	0.8%	49	0.9%	439	0.9%	2.0%	2.0%
Financial activities	253	3.9%	215	5.6%	104	8.7%	532	3.1%	525	4.0%	211	3.7%	1,840	3.9%	5.8%	5.6%
Professional and business services	257	4.0%	100	2.6%	37	3.1%	567	3.3%	694	5.3%	212	3.7%	1,867	3.9%	13.4%	14.0%
Education and health services	1,054	16.4%	721	18.9%	162	13.6%	2,531	14.6%	1,083	8.2%	622	10.9%	6,173	12.9%	15.8%	15.1%
Leisure and hospitality	540	8.4%	318	8.3%	59	5.0%	1,893	10.9%	2,288	17.3%	371	6.5%	5,469	11.5%	10.7%	10.7%
Other services	114	1.8%	74	1.9%	-	0.0%	369	2.1%	298	2.3%	59	1.0%	914	1.9%	2.8%	3.3%
Total	6,433	100%	3,810	100%	1,189	100%	17,350	100%	13,200	100%	5,687	100%	47,669	100%	100%	100%

Source: U.S. Department of Labor, Bureau of Labor Statistics

Exhibit 6 Phelps County Regional Medical Center Community Top 10 Employers by County					
Crawford County	Employees	Dent County	Employees	Maries County	Employees
Paramount Apparel Intl, Inc	300	US Foodservice	400	Belle School Superintendent	125
Crawford County R-2	175	Doe Run Co	263	Kingsford Manufacturing Co	120
Mar-Bal, Inc	118	Wal-Mart Supercenter	230	Maries County Livestock Assn	100
Communications for Research	100	Salem R-80 School	225	Maries R-1 High School	75
Meremec Electric Products	100	Salem Memorial Dist. Hospital	150	Baron Aviation Svc, Inc	65
Versa-Tags, Inc	100	Royal Oak Enterprises, Inc	100	Belle Elementary School	65
Cuba Manor, Inc	95	Salem Treatment Center	75	G & W Foods	60
Ozark Mountain Tech, Inc	95	Seville Care Center	75	Maries Manor Health Care Ctr	50
Phelps County	Employees	Pulaski County	Employees	Texas County	Employees
Phelps County Regional Medical Ctr	1,335	NAF Div	520	Milk Transport SVC, LP	400
University Of Missouri - Rolla	1,200	Wal-Mart Supercenter	389	Texas County Memorial Hospital	299
Wal-Mart	450	General Leonard Wood Army	290	Dairy Farmers of America	250
Davaron Corporate Office	350	Waynesville Senior High School	250	Wal-Mart	198
Mid-Continent Mapping Ctr	320	Fort Leonard Wood Lodging	200	Tag Team Uniform Svc	122
Brewer Science, Inc	300	Piney Ridge Center	162	WoodPro Cabinetry, Inc	115
USGS National Mapping Division	300	Freedom Elementary School	110	Licking Reorganized Dist VIII	114

Source: LocationOne Information System - <http://www.locationone.com>, 2012

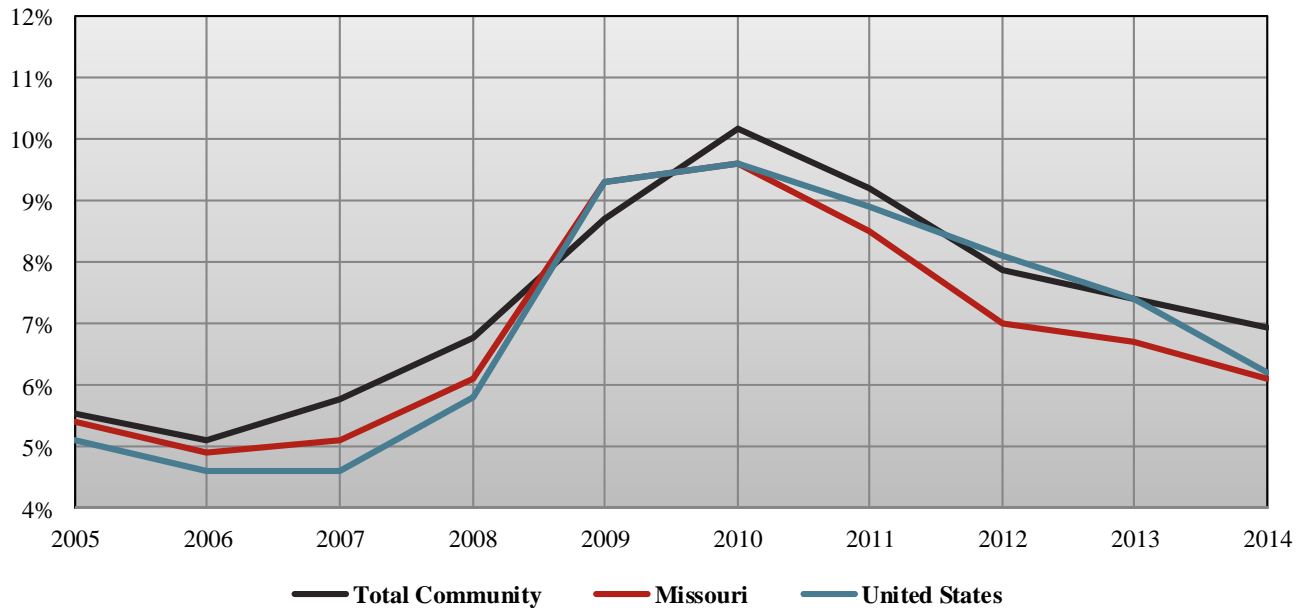
Unemployment Rate

Exhibit 7 presents the average annual resident unemployment rates for the counties in the Community, Missouri and the United States. *Exhibit 8* illustrates that unemployment rates for the Community had risen from 2006 through 2010, and declined in recent years, which was consistent with Missouri and the United States. The unemployment rate for the Community has consistently exceeded Missouri and The United States.

Exhibit 7										
Phelps County Regional Medical Center										
Average Annual Unemployment Rate										
	2005	2006	2007	2008	2009	2010	2011	2012	2013	2014
Crawford County	6.0%	5.8%	7.0%	8.1%	11.0%	12.7%	10.8%	8.7%	8.3%	7.7%
Dent County	6.3%	5.9%	6.7%	7.7%	9.5%	10.3%	9.6%	8.1%	7.0%	6.6%
Maries County	4.7%	4.5%	5.2%	6.3%	8.1%	9.4%	8.3%	7.2%	6.5%	6.1%
Phelps County	4.5%	4.3%	4.9%	5.9%	7.3%	8.8%	8.2%	6.9%	6.8%	6.2%
Pulaski County	5.3%	4.8%	5.2%	5.7%	7.1%	8.8%	8.7%	8.2%	7.9%	7.3%
Texas County	6.4%	5.4%	5.7%	6.9%	9.2%	11.0%	9.7%	8.1%	8.0%	7.8%
Total Community	5.5%	5.1%	5.8%	6.8%	8.7%	10.2%	9.2%	7.9%	7.4%	7.0%
Missouri	5.4%	4.9%	5.1%	6.1%	9.3%	9.6%	8.5%	7.0%	6.7%	6.1%
United States	5.1%	4.6%	4.6%	5.8%	9.3%	9.6%	8.9%	8.1%	7.4%	6.2%

Data Source: US Department of Labor, Bureau of Labor Statistics

Exhibit 8
Average Annual Unemployment Rate 2005 - 2014



Data Source: US Department of Labor, Bureau of Labor Statistics

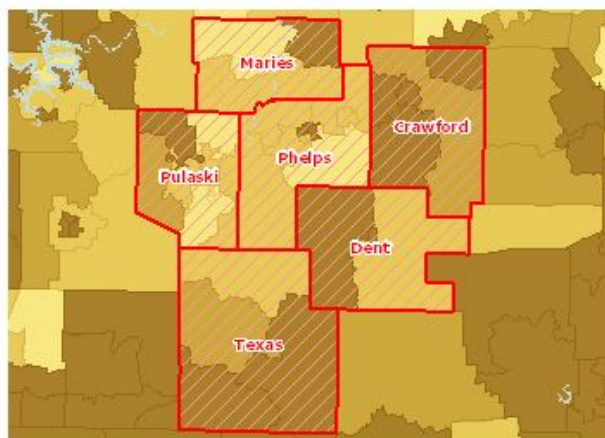
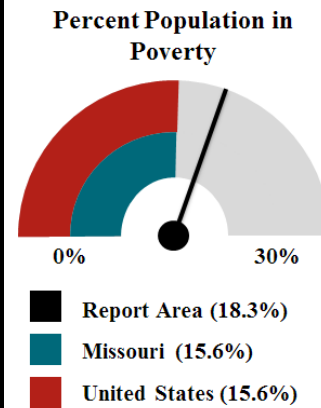
Poverty

Exhibit 9 presents the percentage of total population below 100% FPL (Federal Poverty Level) for the Community, Missouri, and the United States. Poverty is a key driver of health status and is relevant because poverty creates barriers to access including health services, healthy food, and other necessities that contribute to poor health status.

Low-income residents often postpone seeking medical attention until health problems become aggravated, creating a greater demand on a given community’s medical resources. This includes reliance upon emergency room services for otherwise routine primary care. Often uninsured, the low-income demographics’ inability to pay for services further strains the medical network. Low-income residents are also less mobile, requiring medical services in localized population centers, placing additional pressure on those providers already in high demand.

Exhibit 9 Phelps County Regional Medical Center Population Below 100% FPL (Federal Poverty Line)			
	Total Population	Population below FPL	Percent in Poverty
Crawford County	24,253	5,483	22.6%
Dent County	15,366	3,095	20.1%
Maries County	8,975	1,563	17.4%
Phelps County	42,024	8,105	19.3%
Pulaski County	43,712	5,619	12.9%
Texas County	24,227	5,208	21.5%
Total Community	158,557	29,073	18.3%
Missouri	5,847,086	912,291	15.6%
United States	306,226,394	47,755,606	15.6%

Source: US Census Bureau, American Community Survey. 2010-14.



Population Below the Poverty Level, Percent by Tract, ACS 2009-13



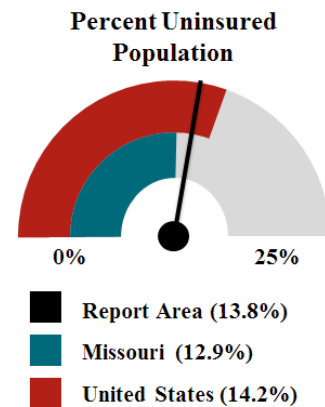
Source: US Census Bureau, American Community Survey. 2009-13.

Uninsured

Exhibit 10 reports the percentage of the total civilian non-institutionalized population without health insurance coverage for the Community, Missouri, and the United States. This indicator is relevant because lack of insurance is a primary barrier to health care access including regular primary care, specialty care, and other health services that contributes to poor health status. The lack of health insurance is considered a key driver of health status.

Exhibit 10 Phelps County Regional Medical Center Health Insurance Coverage Status			
	Total Population	Total Uninsured	Percent Insured
Crawford County	24,396	3,289	13.5%
Dent County	15,496	2,889	18.6%
Maries County	8,993	1,317	14.6%
Phelps County	44,208	5,415	12.2%
Pulaski County	39,903	5,027	12.6%
Texas County	24,202	3,730	15.4%
Total Community	157,198	21,667	13.8%
Missouri	5,914,681	761,852	12.9%
United States	309,082,258	43,878,131	14.2%

Source: US Census Bureau, American Community Survey. 2010-14.

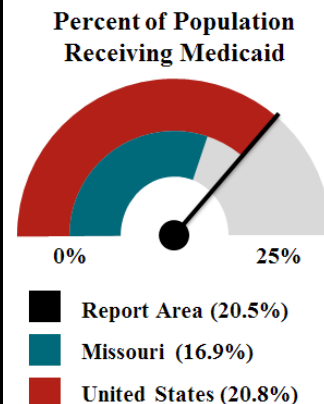


Medicaid

Exhibit 11 reports the percentage of the population with insurance enrolled in Medicaid (or other means-tested public health insurance). This is relevant because it assesses vulnerable populations, which are more likely to have multiple health access, health status, and social support needs; when combined with poverty data, providers can use this measure to identify gaps in eligibility and enrollment.

Exhibit 11 Phelps County Regional Medical Center Medicaid - Tested Public Coverage					
	Total Population	Population With Any Health Insurance	Population Receiving Medicaid	Percent of Total Population Receiving Medicaid	Percent of Insured Population Receiving Medicaid
Crawford County	24,396	21,107	5,750	23.6%	27.2%
Dent County	15,496	12,607	3,477	22.4%	27.6%
Maries County	8,993	7,676	1,679	18.7%	21.9%
Phelps County	44,208	38,793	6,413	14.5%	16.5%
Pulaski County	39,903	34,876	4,848	12.1%	13.9%
Texas County	24,202	20,472	5,551	22.9%	27.1%
Total Community	157,198	135,531	27,718	17.6%	20.5%
Missouri	5,914,681	5,152,829	870,934	14.7%	16.9%
United States	309,082,258	265,204,127	55,035,661	17.8%	20.8%

Source: US Census Bureau, American Community Survey. 2010-14.

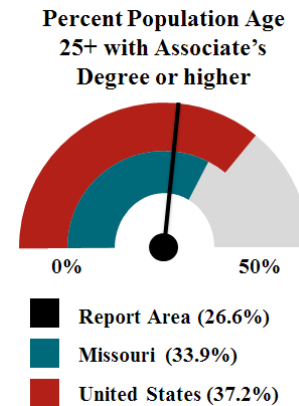


Education

Exhibit 12 presents educational with an Associate’s level degree or higher for the Community, Missouri, and the United States. This is relevant because educational attainment has been linked to positive health outcomes.

Exhibit 12			
Phelps County Regional Medical Center			
Educational Attainment of Population Age 25 and Older			
	Total Population Age 25 and Older	Population with Associate's Degree or Higher	Percent with Associate's Degree or Higher
Crawford County	16,872	3,290	19.5%
Dent County	10,873	2,131	19.6%
Maries County	6,345	1,421	22.4%
Phelps County	27,534	9,444	34.3%
Pulaski County	28,477	9,483	33.3%
Texas County	17,757	2,948	16.6%
Total Community	107,858	28,717	26.6%
Missouri	4,028,930	1,365,807	33.9%
United States	209,056,129	77,768,880	37.2%

Source: US Census Bureau, American Community Survey, 2010-14.



Physical Environment of the Community

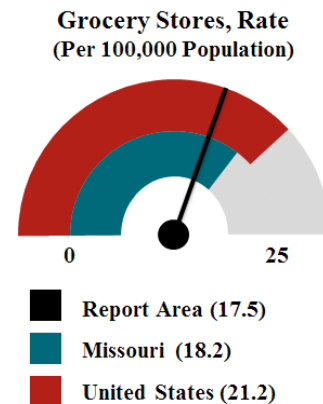
A community’s health also is affected by the physical environment. A safe, clean environment that provides access to healthy food and recreational opportunities is important to maintaining and improving community health. This section will touch on a few of the elements that relate to some needs mentioned throughout the report.

Grocery Store Access

Exhibit 13 reports the number of grocery stores per 100,000-population. Grocery stores are defined as supermarkets and smaller grocery stores primarily engaged in retailing a general line of food, such as canned and frozen foods; fresh fruits and vegetables; fresh and prepared meats, fish, and poultry. Included are delicatessen-type establishments. Convenience stores and large general merchandise stores that also retail food, such as supercenters and warehouse club stores are excluded. This is relevant because it provides a measure of healthy food access and environmental influences on dietary behaviors.

Exhibit 13 Phelps County Regional Medical Center Grocery Store Access			
	Total Population	Number of Establishments	Establishments Rate per 100,000
Crawford County	24,696	4	16.2
Dent County	15,657	5	31.9
Maries County	9,176	3	32.7
Phelps County	45,156	7	15.5
Pulaski County	52,274	5	9.6
Texas County	26,008	5	19.2
Total Community	172,967	29	17.5
Missouri	5,988,927	1,092	18.2
United States	312,732,537	66,286	21.2

*Data Source: US Census Bureau, County Business Patterns
Additional data analysis by CARES. 2013.*

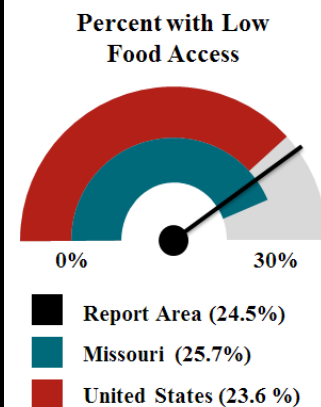


Food Access/Food Deserts

Exhibit 14 reports the percentage of the population living in census tracts designated as food deserts. A food desert is defined as a low-income census tract where a substantial number or share of residents has low access to a supermarket or large grocery store. This is relevant because it highlights populations and geographies facing food insecurity.

Exhibit 14			
Phelps County Regional Medical Center			
Population with Low Food Access			
	Total Population	Population with Low Food Access	Percent with Low Food Access
Crawford County	24,696	1,912	7.7%
Dent County	15,657	2,865	18.3%
Maries County	9,176	504	5.5%
Phelps County	45,156	8,445	18.7%
Pulaski County	52,274	23,935	45.8%
Texas County	26,008	4,701	18.1%
Total Community	172,967	42,362	24.5%
Missouri	5,988,927	1,535,954	25.7%
United States	308,745,538	72,905,540	23.6%

Data Source: US Department of Agriculture, Economic Research Service, USDA - Food Access Research Atlas. 2010.

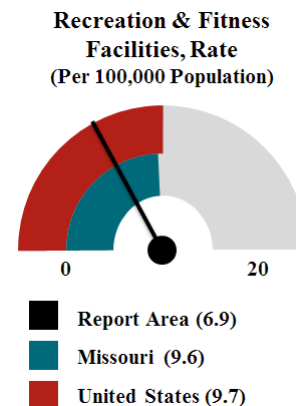


Recreation and Fitness Facility Access

Exhibit 15 reports the number per 100,000-population of recreation and fitness facilities as defined by North American Industry Classification System (NAICS) Code 713940. It is relevant because access to recreation and fitness facilities encourages physical activity and other healthy behaviors.

Exhibit 15			
Phelps County Regional Medical Center			
Recreation and Fitness Facility Access			
	Total Population	Number of Establishments	Establishments Rate per 100,000
Crawford County	24,696	2	8.1
Dent County	15,657	1	6.4
Maries County	9,176	-	-
Phelps County	45,156	4	8.9
Pulaski County	52,274	4	7.7
Texas County	26,008	1	3.8
Total Community	172,967	12	6.9
Missouri	5,988,927	575	9.6
United States	312,732,537	30,393	9.7

Data Source: US Census Bureau, County Business Patterns Additional data analysis by CARES. 2013.



Clinical Care of the Community

A lack of access to care presents barriers to good health. The supply and accessibility of facilities and physicians, the rate of un-insurance, financial hardship, transportation barriers, cultural competency, and coverage limitations affect access.

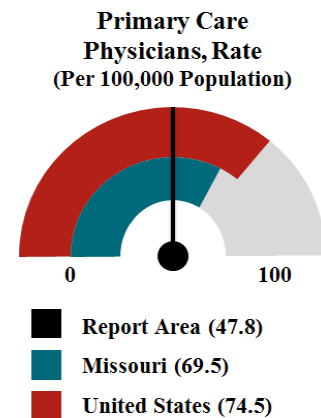
Rates of morbidity, mortality, and emergency hospitalizations can be reduced if community residents access services such as health screenings, routine tests, and vaccinations. Prevention indicators can call attention to a lack of access or knowledge regarding one or more health issues and can inform program interventions.

Access to Primary Care

Exhibit 16 reports the number of primary care physicians per 100,000-population. Doctors classified as “primary care physicians” by the AMA include: General Family Medicine MDs and DOs, General Practice MDs and DOs, General Internal Medicine MDs, and General Pediatrics MDs. Physicians age 75 and over, and physicians practicing sub-specialties within the listed specialties are excluded. This is relevant because a shortage of health professionals contributes to access and health status issues.

Exhibit 16			
Phelps County Regional Medical Center			
Access to Primary Care			
	Total Population 2012	Primary Care Physicians 2012	Primary Care Physicians Rate per 100,000
Crawford County	24,832	3	12.1
Dent County	15,647	5	32.0
Maries County	9,014	1	11.1
Phelps County	44,987	47	104.5
Pulaski County	53,259	14	26.3
Texas County	25,810	13	50.4
Total Community	173,549	83	47.8
Missouri	6,021,988	4,185	69.5
United States	313,914,040	233,862	74.5

Data Source: US Department of Health & Human Services, Health Resources and Services Administration, Area Health Resource File. 2012.

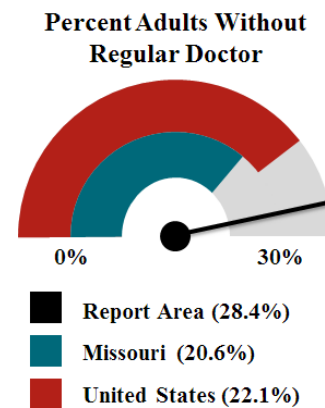


Lack of a Consistent Source of Primary Care

Exhibit 17 reports the percentage of adults aged 18 and older who self-report that they do not have at least one person who they think of as their personal doctor or health care provider. This is relevant because access to regular primary care is important to preventing major health issues and emergency department visits.

Exhibit 17 Phelps County Regional Medical Center Lack of a Consistent Source of Primary Care			
	Survey Population Age 18 and Older	Total Adults without Regular Doctor	Percent without Regular Doctor
Crawford County	20,935	5,414	25.9%
Dent County	10,186	1,956	19.2%
Maries County	No Data	No Data	No Data
Phelps County	35,224	11,965	34.0%
Pulaski County	25,690	5,923	23.1%
Texas County	21,600	7,041	32.6%
Total Community	113,635	32,299	28.4%
Missouri	4,560,355	938,202	20.6%
United States	236,884,668	52,290,932	22.1%

Data Source: Centers for Disease Control and Prevention, Behavioral Risk Factor Surveillance System. Additional data analysis by CARES. 2011-2012.

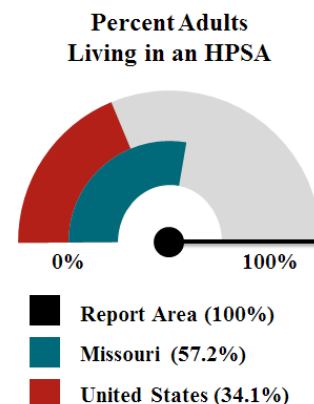


Population Living in a Health Professional Shortage Area

Exhibit 18 reports the percentage of the population that is living in a geographic area designated as a “Health Professional Shortage Area” (HPSA), defined as having a shortage of primary medical care, dental or mental health professionals. This is relevant because a shortage of health professionals contributes to access and health status issues.

Exhibit 18 Phelps County Regional Medical Center Population Living in a Health Professional Shortage Area (HPSA)			
	Total Population	Population Living in an HPSA	Percent Living in an HPSA
Crawford County	24,696	24,696	100.0%
Dent County	15,657	15,657	100.0%
Maries County	9,176	9,176	100.0%
Phelps County	45,156	45,156	100.0%
Pulaski County	52,274	52,274	100.0%
Texas County	26,008	26,008	100.0%
Total Community	172,967	172,967	100.0%
Missouri	5,988,927	3,427,496	57.2%
United States	308,745,538	105,203,742	34.1%

Data Source: US Department of Health Human Services, Health Resources and Services Administration, Health Resources and Services Administration. March 2015



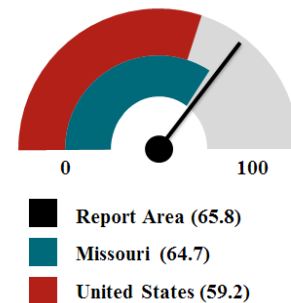
Preventable Hospital Events

Exhibit 19 reports the discharge rate (per 1,000 Medicare enrollees) for conditions that are Ambulatory Care Sensitive (ACS). ACS conditions include pneumonia, dehydration, asthma, diabetes, and other conditions, which could have been prevented if adequate primary care resources were available and accessed by those patients. This indicator is relevant because analysis of ACS discharges demonstrates a possible “return on investment” from interventions that reduce admissions (for example, uninsured or Medicaid patients) through better access to primary care resources.

Exhibit 19			
Phelps County Regional Medical Center			
Preventable Hospital Events			
	Total Medicare Part A Enrollees	ACS Conditions Hospital Discharges	ACS Conditions Discharges Rate
Crawford County	2,873	171	59.7
Dent County	2,729	229	83.1
Maries County	2,169	151	69.7
Phelps County	5,619	330	58.9
Pulaski County	2,176	108	48.7
Texas County	3,391	258	76.4
Total Community	18,957	1,247	65.8
Missouri	620,963	40,179	64.7
United States	58,209,898	3,448,111	59.2

Data Source: Dartmouth College Institute for Health Policy Clinical Practice, Dartmouth Atlas of Health Care. 2012.

**Preventable Hospital Events,
Age-Adjusted Discharge Rate
(Per 1,000 Medicare Enrollees)**



Health Status of the Community

This section of the assessment reviews the health status of the Community with comparisons to the state of Missouri. This in-depth assessment of the mortality and morbidity data, health outcomes, health factors, and mental health indicators of the county residents that make up the Community will enable the Medical Center to identify priority health issues related to the health status of its residents.

Good health can be defined as a state of physical, mental, and social well-being, rather than the absence of disease or infirmity. According to *Healthy People 2010*, the national health objectives released by the U.S. Department of Health and Human Services, individual health is closely linked to community health. Community health, which includes both the physical and social environment in which individuals live, work, and play is profoundly affected by the collective behaviors, attitudes, and beliefs of everyone who lives in the community. Healthy people are among a community's most essential resources.

Numerous factors have a significant impact on an individual's health status: lifestyle and behavior, human biology, environmental, and socioeconomic conditions, as well as access to adequate and appropriate health care and medical services. Studies by the American Society of Internal Medicine conclude that up to 70 percent of an individual's health status is directly attributable to personal lifestyle decisions and attitudes. Persons who do not smoke, who drink in moderation (if at all), use automobile seat belts (car seats for infants and small children), maintain a nutritious low-fat, high-fiber diet, reduce excess stress in daily living, and exercise regularly have a significantly greater potential of avoiding debilitating diseases, infirmities, and premature death.

The interrelationship among lifestyle/behavior, personal health attitude and poor health status is gaining recognition and acceptance by both the general public and health care providers. Some examples of lifestyle/behavior and related health care problems include the following:

<i>Lifestyle</i>	<i>Primary Disease Factor</i>
Smoking	Lung cancer Cardiovascular disease Emphysema Chronic bronchitis
Alcohol/drug abuse	Cirrhosis of liver Motor vehicle crashes Unintentional injuries Malnutrition Suicide Homicide Mental illness
Poor nutrition	Obesity Digestive disease Depression
Driving at excessive speeds	Trauma Motor vehicle crashes

Continued on next page

Lifestyle	Primary Disease Factor
Lack of exercise	Cardiovascular disease Depression
Overstressed	Mental illness Alcohol/drug abuse Cardiovascular disease

Health problems should be examined in terms of morbidity as well as mortality. Morbidity is defined as the incidence of illness or injury and mortality is defined as the incidence of death. However, law does not require reporting the incidence of a particular disease, except when the public health is potentially endangered. More than 50 infectious diseases in Missouri must be reported to county health departments. Except for Acquired Immune Deficiency Syndrome (AIDS), most of these reportable diseases currently result in comparatively few deaths.

Due to limited morbidity data, this health status report relies heavily on death and death rate statistics for leading causes in death in the Community, along with the state of Missouri. Such information provides useful indicators of health status trends and permits an assessment of the impact of changes in health services on a resident population during an established period of time. Community attention and health care resources may then be directed to those areas of greatest impact and concern.

Leading Causes of Death

Exhibit 20 reflects the leading causes of death for the Community, and compares the rates, to the state of Missouri average rates, per hundred thousand.

Exhibit 20								
Phelps County Regional Medical Center Community								
Selected Causes of Resident Deaths: Number and Crude Rate								
(Crude rates per 100,000 population)								
Crawford County		Dent County		Maries County		Phelps County		
#	Rate	#	Rate	#	Rate	#	Rate	
Heart Disease	90 365.5	44 281.1	29 320.9	109 243.2				
Cancer	65 263.6	45 287.5	24 261.5	82 183.1				
Ischaemic Heart Disease	71 287.0	29 186.6	14 151.6	79 176.4				
Lung Disease	16 66.3	17 106.1	5 57.1	25 56.1				
Stroke	15 59.0	11 70.3	6 63.7	29 65.5				
Unintentional Injury	18 71.2	12 74.1	7 72.5	29 65.0				
Motor Vehicle Accident	6 25.9	5 30.7	2 22.0	9 19.6				
Suicide	4 15.4	3 17.9	2 24.2	6 14.3				
Pulaski County		Texas County		Missouri		United States		
#	Rate	#	Rate	#	Rate	#	Rate	
Heart Disease	69 131.1	67 259.3	13,881 231.1	600,899 193.0				
Cancer	65 124.3	58 225.3	12,689 211.3	577,313 185.4				
Ischaemic Heart Disease	49 93.9	44 169.5	8,965 149.3	376,572 120.9				
Lung Disease	19 36.9	24 92.1	3,591 59.8	142,214 45.7				
Stroke	16 30.8	16 61.9	2,995 49.9	128,955 41.4				
Unintentional Injury	23 43.0	16 60.4	3,013 50.2	124,733 40.1				
Motor Vehicle Accident	8 14.4	7 27.9	829 13.8	34,139 11.0				
Suicide	7 13.7	5 20.1	905 15.1	39,308 12.6				

Data Source: Centers for Disease Control and Prevention, National Vital Statistics System.
 Accessed via CDC WONDER. 2009-13.

Health Outcomes and Factors

An analysis of various health outcomes and factors for a particular community can, if improved, help make that community a healthier place to live, learn, work, and play. A better understanding of the factors that affect the health of the Community will assist with how to improve the Community's habits, culture, and environment. This portion of the Community Health Needs Assessment utilizes information from County Health Rankings, a key component of the Mobilizing Action Toward Community Health (MATCH) project, a collaboration between the Robert Wood Johnson Foundation and the University of Wisconsin Population Health Institute.

The County Health Rankings model is grounded in the belief that programs and policies implemented at the local, state, and federal levels have an impact on the variety of factors that, in turn, determine the health outcomes for communities across the nation. The model provides a ranking method that ranks all 50 states and the counties within each state, based on the measurement of two types of health outcomes for each county: how long people live (mortality) and how healthy people feel (morbidity). These outcomes are the result of a collection of health factors and are influenced by programs and policies at the local, state, and federal levels.

Counties in each of the 50 states are ranked according to summaries of a variety of health measures. Those having high ranks, *e.g. 1 or 2*, are considered to be the "healthiest." Counties are ranked relative to the health of other counties in the same state on the following summary measures:

- Health Outcomes - rankings are based on an equal weighting of one length of life (mortality) measure and four quality of life (morbidity) measures.
- Health Factors - rankings are based on weighted scores of four types of factors:
 - Health behaviors (six measures)
 - Clinical care (five measures)
 - Social and economic (seven measures)
 - Physical environment (four measures)

A more detailed discussion about the ranking system, data sources and measures, data quality and calculating scores and ranks can be found at the website for County Health Rankings (www.countyhealthrankings.org).

As part of the analysis of the needs assessment for the Community, the six counties that comprise the Community will be used to compare the relative health status of each county to the state of Missouri as well as to a national benchmark as seen in Exhibits 21. The current year information is compared to the health outcomes reported on the prior Community Health Needs Assessment and the change in measures is indicated. A better understanding of the factors that affect the health of the Community will assist with how to improve the Community's habits, culture, and environment.

Health Outcomes - rankings are based on an equal weighting of one length of life (mortality) measure and four quality of life (morbidity) measures. The following tables show changes in the counties included in the Community's mortality and morbidity outcomes have mostly decreased from the prior Community Health Needs Assessment.

Exhibit 21a					
Phelps County Regional Medical Center Community					
County Health Rankings - Health Outcomes					
	Crawford County 2012	Crawford County 2015	Increase/ Decrease	MO 2015	Top US Performers 2015
Mortality*	80	77	↓		
Premature death - Years of potential life lost before age 75 per 100,000 population (age-adjusted)	9,230	9,048	↓	7,714	5,200
Morbidity*	104	84	↓		
Poor or fair health - Percent of adults reporting fair or poor health (age-adjusted)	19%	19%	—	16%	10%
Poor physical health days - Average number of physically unhealthy days reported in past 30 days (age-adjusted)	6.7	5.2	↓	3.7	2.5
Poor mental health days - Average number of mentally unhealthy days reported in past 30 days (Age Adjusted)	4.9	4.0	↓	3.8	2.3
Low birth weight - Percent of live births with low birth weight (<2500 grams)	8.7%	8.0%	↓	8.0%	5.9%
* Rank out of 114 Missouri counties Note: N/A Indicates Missing Data Source: Countyhealthrankings.org					

Exhibit 21b					
Phelps County Regional Medical Center Community					
County Health Rankings - Health Outcomes					
	Dent County 2012	Dent County 2015	Increase/ Decrease	MO 2015	Top US Performers 2015
Mortality*	106	102	↓		
Premature death - Years of potential life lost before age 75 per 100,000 population (age-adjusted)	11,871	10,264	↓	7,714	5,200
Morbidity*	95	106	↑		
Poor or fair health - Percent of adults reporting fair or poor health (age-adjusted)	N/A	39%	—	16%	10%
Poor physical health days - Average number of physically unhealthy days reported in past 30 days (age-adjusted)	5.2	7.0	↑	3.7	2.5
Poor mental health days - Average number of mentally unhealthy days reported in past 30 days (Age Adjusted)	4.4	N/A	—	3.8	2.3
Low birth weight - Percent of live births with low birth weight (<2500 grams)	8.4%	7.9%	↓	8.0%	5.9%
* Rank out of 114 Missouri counties Note: N/A Indicates Missing Data Source: Countyhealthrankings.org					

Exhibit 21c					
Phelps County Regional Medical Center Community					
County Health Rankings - Health Outcomes					
	Maries County 2012	Maries County 2015	Increase/ Decrease	MO 2015	Top US Performers 2015
Mortality*	32	11	↓		
Premature death - Years of potential life lost before age 75 per 100,000 population (age-adjusted)	7,766	6,388	↓	7,714	5,200
Morbidity*	41	8	↓		
Poor or fair health - Percent of adults reporting fair or poor health (age-adjusted)	13%	12%	↓	16%	10%
Poor physical health days - Average number of physically unhealthy days reported in past 30 days (age-adjusted)	3.5	3.8	↑	3.7	2.5
Poor mental health days - Average number of mentally unhealthy days reported in past 30 days (Age Adjusted)	5.9	N/A	—	3.8	2.3
Low birth weight - Percent of live births with low birth weight (<2500 grams)	6.2%	5.5%	↓	8.0%	5.9%
* Rank out of 114 Missouri counties Note: N/A Indicates Missing Data Source: Countyhealthrankings.org					

Exhibit 21d					
Phelps County Regional Medical Center Community					
County Health Rankings - Health Outcomes					
	Phelps County 2012	Phelps County 2015	Increase/ Decrease	MO 2015	Top US Performers 2015
Mortality*	66	81	↑		
Premature death - Years of potential life lost before age 75 per 100,000 population (age-adjusted)	8,811	9,210	↑	7,714	5,200
Morbidity*	85	75	↓		
Poor or fair health - Percent of adults reporting fair or poor health (age-adjusted)	30%	22%	↓	16%	10%
Poor physical health days - Average number of physically unhealthy days reported in past 30 days (age-adjusted)	4.4	4.6	↑	3.7	2.5
Poor mental health days - Average number of mentally unhealthy days reported in past 30 days (Age Adjusted)	4.4	3.9	↓	3.8	2.3
Low birth weight - Percent of live births with low birth weight (<2500 grams)	7.9%	7.6%	↓	8.0%	5.9%
* Rank out of 114 Missouri counties Note: N/A Indicates Missing Data Source: Countyhealthrankings.org					

Exhibit 21e					
Phelps County Regional Medical Center Community					
County Health Rankings - Health Outcomes					
	Pulaski County 2012	Pulaski County 2015	Increase/ Decrease	MO 2015	Top US Performers 2015
Mortality*	41	48	↑		
Premature death - Years of potential life lost before age 75 per 100,000 population (age-adjusted)	8,100	7,834	↓	7,714	5,200
Morbidity*	55	68	↑		
Poor or fair health - Percent of adults reporting fair or poor health (age-adjusted)	23%	22%	↓	16%	10%
Poor physical health days - Average number of physically unhealthy days reported in past 30 days (age-adjusted)	3.7	4.6	↑	3.7	2.5
Poor mental health days - Average number of mentally unhealthy days reported in past 30 days (Age Adjusted)	2.9	3.4	↑	3.8	2.3
Low birth weight - Percent of live births with low birth weight (<2500 grams)	7.4%	7.3%	↓	8.0%	5.9%
* Rank out of 114 Missouri counties Note: N/A Indicates Missing Data Source: Countyhealthrankings.org					

Exhibit 21f					
Phelps County Regional Medical Center Community					
County Health Rankings - Health Outcomes					
	Texas County 2012	Texas County 2015	Increase/ Decrease	MO 2015	Top US Performers 2015
Mortality*	89	88	↓		
Premature death - Years of potential life lost before age 75 per 100,000 population (age-adjusted)	10,029	9,549	↓	7,714	5,200
Morbidity*	102	101	↓		
Poor or fair health - Percent of adults reporting fair or poor health (age-adjusted)	30%	30%	—	16%	10%
Poor physical health days - Average number of physically unhealthy days reported in past 30 days (age-adjusted)	6.6	6.8	↑	3.7	2.5
Poor mental health days - Average number of mentally unhealthy days reported in past 30 days (Age Adjusted)	4.0	4.7	↑	3.8	2.3
Low birth weight - Percent of live births with low birth weight (<2500 grams)	7.6%	7.2%	↓	8.0%	5.9%
* Rank out of 114 Missouri counties Note: N/A Indicates Missing Data Source: Countyhealthrankings.org					

A number of different health factors shape a community's health outcomes. The County Health Rankings model includes four types of health factors: health behaviors, clinical care, social and economic, and the physical environment. The following summary shows some of the major improvements from the prior Community Health Needs Assessment to current year and challenges faced by each county in the Medical Center's Community. The improvements/challenges shown below in *Exhibits 22* were determined using a process of comparing the rankings of each county's health outcomes in the current year to the rankings in the prior Community Health Needs Assessment. If the current year rankings showed an improvement or decline of four percent or four points, they were included in the charts below. Please refer to the Appendix for the full list of health factor findings and comparisons between the prior Community Health Needs Assessment information and current year information.

Exhibit 22a	
Phelps County Regional Medical Center Community	
Crawford County Improvements and Challenges	
Improvements	Challenges
Teen Births - number decreased from 70 to 54	Sexually Transmitted Infections - rate increased from 179 to 193
Preventable Hospital Stays - number decreased from 93 to 60	Primary Care Physicians - Ratio of population to primary care physicians increased from 5,969:1 to 8,277:1
High School Graduation - percent increased from 72% to 83%	Children in single-parent households - percent increased from 33% to 37%
Unemployment - percent decreased from 11.2% to 7.2%	
Violent Crime Rate - rate decreased from 323 to 215	

Source: *Countyhealthrankings.org*

Exhibit 22b	
Phelps County Regional Medical Center Community	
Dent County Improvements and Challenges	
Improvements	Challenges
Teen Births - number decreased from 56 to 52	Sexually Transmitted Infections - rate increased from 158 to 185
Primary Care Physicians - Ratio of population to primary care physicians decreased from 5,026:1 to 3,129:1	Children in Poverty - percent increased from 30% to 34%
Preventable Hospital Stays - number decreased from 99 to 83	Children in single-parent households - percent increased from 21% to 35%
	Violent Crime Rate - rate increased from 189 to 198

Source: *Countyhealthrankings.org*

Exhibit 22c	
Phelps County Regional Medical Center Community	
Maries County Improvements and Challenges	
Improvements	Challenges
Sexually Transmitted Infections - rate decreased from 199 to 100	Primary Care Physicians - Ratio of population to primary care physicians increased from 8,924:1 to 9,014:1
Teen Births - number decreased from 48 to 40	Mammography Screenings - percent decreased from 58.7% to 50.8%
Preventable Hospital Stays - number decreased from 86 to 70	Children in Poverty - percent increased from 23% to 27%
Diabetic Screenings - percent increased from 77% to 85%	Violent Crime Rate - rate increased from 117 to 309
Children in Single-Parent Households - percent decreased from 31% to 27%	

Source: *Countyhealthrankings.org*

Exhibit 22d	
Phelps County Regional Medical Center Community	
Phelps County Improvements and Challenges	
Improvements	Challenges
Excessive Drinking - percent decreased from 19% to 14%	Adult Smoking - percent increased from 22% to 27%
Teen Births - number decreased from 48 to 40	
Primary Care Physicians - Ratio of population to primary care physicians decreased from 1,277:1 to 957:1	
Preventable Hospital Stays - number decreased from 82 to 59	
Mammography Screenings - percent increased from 58% to 64%	
Violent Crime Rate - rate decreased from 352 to 316	

Source: *Countyhealthrankings.org*

Exhibit 22e	
Phelps County Regional Medical Center Community Pulaski County Improvements and Challenges	
Improvements	Challenges
Sexually Transmitted Infections - rate decreased from 1,030 to 599	Primary Care Physicians - Ratio of population to primary care physicians increased from 3,730:1 to 3,804:1
Teen Births - number decreased from 38 to 33	High School Graduation - percent decreased from 91% to 85%
Preventable Hospital Stays - number decreased from 93 to 50	
Some College - percent increased from 60.9% to 66.4%	
Violent Crime Rate - rate decreased from 447 to 319	

Source: *Countyhealthrankings.org*

Exhibit 22f	
Phelps County Regional Medical Center Community Texas County Improvements and Challenges	
Improvements	Challenges
Teen Births - number decreased from 60 to 56	Sexually Transmitted Infections - rate increased from 167 to 233
Primary Care Physicians - Ratio of population to primary care physicians decreased from 3,500:1 to 1,985:1	Preventable Hospital Stays - number increased from 65 to 76
Violent Crime Rate - rate decreased from 149 to 81	Diabetic Screenings - percent decreased from 84% to 80%
	Children in Poverty - percent increased from 33% to 38%

Source: *Countyhealthrankings.org*

As can be seen from the summarized tables above, there are numerous areas of the Community that have room for improvement when compared to the state statistics. However, there are also significant improvements made within each county from the prior Community Health Needs Assessment.

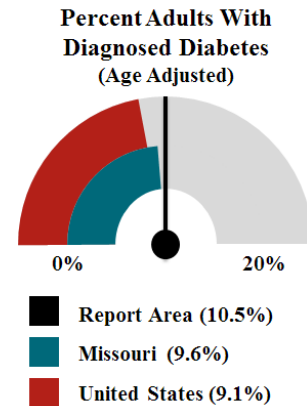
The following exhibits show a more detailed view of certain health outcomes and factors for the Community, Missouri, and the United States.

Diabetes (Adult)

Exhibit 23 reports the percentage of adults aged 20 and older who have ever been told by a doctor that they have diabetes. This is relevant because diabetes is a prevalent problem in the U.S.; it may indicate an unhealthy lifestyle and puts individuals at risk for further health issues.

Exhibit 23 Phelps County Regional Medical Center Population with Diagnosed Diabetes			
	Total Population Age 20 and Older	Population with Diagnosed Diabetes	Percent* with Diagnosed Diabetes
Crawford County	18,361	1,983	9.2%
Dent County	11,734	1,455	10.0%
Maries County	6,765	805	9.6%
Phelps County	33,165	4,013	11.4%
Pulaski County	36,798	3,459	11.4%
Texas County	19,530	2,285	9.6%
Total Community	126,353	14,000	10.5%
Missouri	4,451,148	476,233	9.6%
United States	234,058,710	23,059,940	9.1%

* Age-adjusted Rate
Data Source: Centers for Disease Control and Prevention, National Center for Chronic Disease Prevention and Health Promotion, 2012.

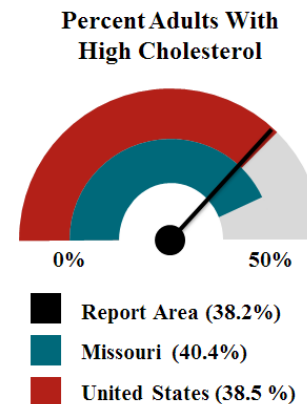


High Cholesterol (Adult)

Exhibit 24 reports the percentage of adults aged 18 and older who self-report that they have ever been told by a doctor, nurse, or other health professional that they had high blood cholesterol.

Exhibit 24 Phelps County Regional Medical Center Population with High Cholesterol			
	Survey Population Age 18 and Older	Population with High Cholesterol	Percent with High Cholesterol
Crawford County	19,448	8,176	42.0%
Dent County	7,414	3,750	50.6%
Maries County	No Data	No Data	No Data
Phelps County	22,568	7,472	33.1%
Pulaski County	14,856	6,588	44.4%
Texas County	17,288	5,174	29.9%
Total Community	81,574	31,160	38.2%
Missouri	3,449,710	1,394,360	40.4%
United States	180,861,326	69,662,357	38.5%

Data Source: Centers for Disease Control and Prevention, Behavioral Risk Factor Surveillance System. Additional data analysis by CARES, 2011-12.

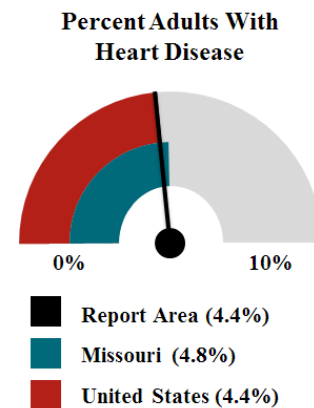


Heart Disease (Adult)

Exhibit 25 reports the percentage of adults aged 18 and older who self-report that they have ever been told by a doctor, nurse, or other health professional that they have coronary heart disease or angina. This is relevant because coronary heart disease is a leading cause of death in the U.S. and is also related to high blood pressure, high cholesterol, and heart attacks.

Exhibit 25 Phelps County Regional Medical Center Population with Heart Disease			
	Survey Population Age 18 and Older	Population with Heart Disease	Percent with Heart Disease
Crawford County	20,936	904	4.3%
Dent County	10,695	188	1.8%
Maries County	No Data	No Data	No Data
Phelps County	35,192	1,311	3.7%
Pulaski County	25,413	579	2.3%
Texas County	21,150	2,044	9.7%
Total Community	113,386	5,026	4.4%
Missouri	4,527,296	218,318	4.8%
United States	236,406,904	10,407,185	4.4%

Data Source: Centers for Disease Control and Prevention, Behavioral Risk Factor Surveillance System. Additional data analysis by CARES. 2011-12.

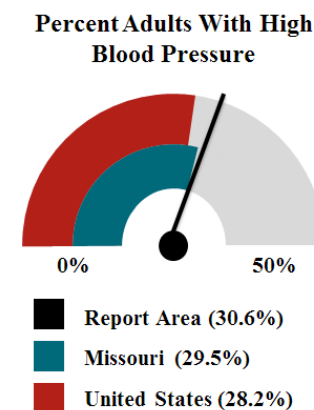


High Blood Pressure (Adult)

Exhibit 26 reports the percentage of adults aged 18 and older who self-report that they have ever been told by a doctor, nurse, or other health professional that they had high blood pressure.

Exhibit 26 Phelps County Regional Medical Center Population with High Blood Pressure			
	Survey Population Age 18 and Older	Population with High Blood Pressure	Percent with High Blood Pressure
Crawford County	18,606	3,870	20.8%
Dent County	11,992	No Data	No Data
Maries County	6,990	No Data	No Data
Phelps County	34,945	9,854	28.2%
Pulaski County	38,525	15,680	40.7%
Texas County	19,893	4,894	24.6%
Total Community	130,951	34,298	30.6%
Missouri	4,532,155	1,336,986	29.5%
United States	232,556,016	65,476,522	28.2%

Data Source: Centers for Disease Control and Prevention, Behavioral Risk Factor Surveillance System. Additional data analysis by CARES. 2006-12.

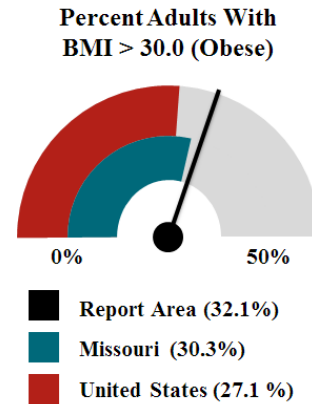


Obesity

Exhibit 27 reports the percentage of adults aged 20 and older self-report that they have a Body Mass Index (BMI) greater than 30.0 (obese). Excess weight may indicate an unhealthy lifestyle and puts individuals at risk for further health issues.

Exhibit 27 Phelps County Regional Medical Center Population with Obesity			
	Survey Population Age 20 and Older	Population with BMI > 30.0 (Obese)	Percent* with BMI > 30.0 (Obese)
Crawford County	18,306	6,041	32.8%
Dent County	11,711	4,134	35.2%
Maries County	6,757	2,223	32.6%
Phelps County	33,223	10,000	30.0%
Pulaski County	36,708	12,187	33.3%
Texas County	19,596	6,016	30.5%
Total Community	126,301	40,601	32.1%
Missouri	4,456,386	1,365,174	30.3%
United States	231,417,834	63,336,403	27.1%

* Age-adjusted Rate
Data Source: Centers for Disease Control and Prevention, National Center for Chronic Disease Prevention and Health Promotion. 2012.

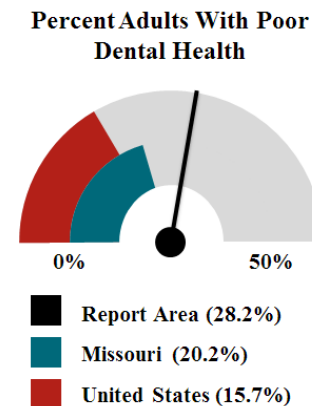


Poor Dental Health

Exhibit 28 reports the percentage of adults aged 18 and older who self-report that six or more of their permanent teeth have been removed due to tooth decay, gum disease, or infection. This is relevant because it indicates lack of access to dental care and/or social barriers to utilization of dental services.

Exhibit 28 Phelps County Regional Medical Center Population with Poor Dental Health			
	Survey Population Age 18 and Older	Population with Poor Dental Health	Percent with Poor Dental Health
Crawford County	18,523	5,236	28.3%
Dent County	11,919	5,178	43.4%
Maries County	6,956	0	0.0%
Phelps County	34,641	9,827	28.4%
Pulaski County	37,363	7,262	19.4%
Texas County	19,836	8,899	44.9%
Total Community	129,238	36,402	28.2%
Missouri	4,532,155	915,359	20.2%
United States	235,375,690	36,842,620	15.7%

Data Source: Centers for Disease Control and Prevention, Behavioral Risk Factor Surveillance System. Additional data analysis by CARES. 2006-10.

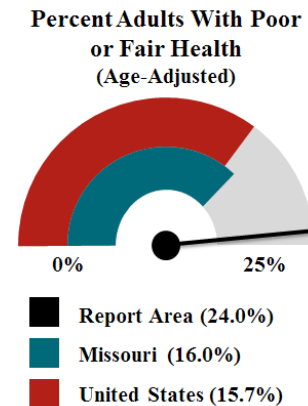


Poor General Health

Exhibit 29 reports the percentage of adults aged 18 and older self-report having poor or fair health in response to the question "Would you say that in general your health is excellent, very good, good, fair, or poor?" This is relevant because it is a measure of general poor health status.

Exhibit 29 Phelps County Regional Medical Center Population with Poor General Health			
	Survey Population Age 18 and Older	Population with Poor General Health	Percent* with Poor General Health
Crawford County	18,606	3,442	19.0%
Dent County	11,992	4,893	39.3%
Maries County	6,990	944	11.9%
Phelps County	34,945	8,247	22.1%
Pulaski County	38,525	7,474	22.2%
Texas County	19,893	6,306	30.2%
Total Community	130,951	31,306	24.0%
Missouri	4,532,155	765,934	16.0%
United States	232,556,016	37,766,703	15.7%

* Age-adjusted Rate
 Data Source: Centers for Disease Control and Prevention, Behavioral Risk Factor Surveillance System. Additional data analysis by CARES. 2006-12.

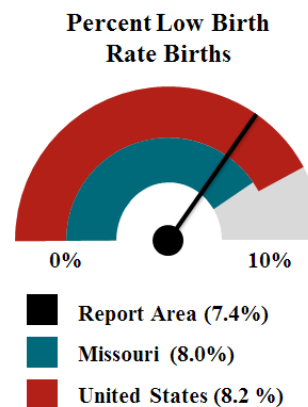


Low Birth Weight

Exhibit 30 reports the percentage of total births that are low birth weight (Under 2500g). This is relevant because low birth weight infants are at high risk for health problems. This can also highlight the existence of health disparities.

Exhibit 30 Phelps County Regional Medical Center Births with Low Birth Weight (under 2500g)			
	Total Live Births	Low Weight Births	Percent Low Weight Births
Crawford County	2,289	183	8.0%
Dent County	1,260	100	7.9%
Maries County	686	38	5.5%
Phelps County	3,864	294	7.6%
Pulaski County	5,096	372	7.3%
Texas County	2,100	151	7.2%
Total Community	15,295	1,138	7.4%
Missouri	556,612	44,529	8.0%
United States	29,300,495	2,402,641	8.2%

Data Source: Centers for Disease Control and Prevention, Behavioral Risk Factor Surveillance System. Additional data analysis by CARES. 2006-10.



Key Informant Interviews

Interviewing key informants (Community stakeholders) is a technique employed to assess public perceptions of the county's health status and unmet needs. These interviews are intended to ascertain opinions among individuals likely to be knowledgeable about the Community and influential over the opinions of others about health concerns in the Community.

Methodology

Interviews with 11 key informants were conducted in February 2016. Interviewees were determined based on their a) specialized knowledge or expertise in public health, b) their affiliation with local government, schools, and industry or c) their involvement with underserved and minority populations.

A representative from the Medical Center contacted all individuals nominated for interviewing. Her knowledge of the Community, and the personal relationships she held with the potential interviewees added validity to the data collection process. If the respective key informant agreed to an interview, an interview time and place was scheduled.

All interviews were conducted using a standard questionnaire. A copy of the interview instrument is included in the Appendices. A summary of their opinions is reported without judging the truthfulness or accuracy of their remarks. Community leaders provided comments on the following issues:

- ✓ Health and quality of life for residents of the primary Community
- ✓ Barriers to improving health and quality of life for residents of the primary Community
- ✓ Opinions regarding the important health issues that affect the counties within the Community
- ✓ Delineation of the most important health care issues or services discussed and actions necessary for addressing those issues

Themes in the data were identified and representative quotes have been drawn from the data to illustrate the themes. Interviewees were assured that personal identifiers such as name or organizational affiliations would not be connected in any way to the information presented in this report. Therefore, quotes included in the report may have been altered slightly to preserve confidentiality.

This technique does not provide a quantitative analysis of the leaders' opinions, but reveals some of the factors affecting the views and sentiments about overall health and quality of life within the Community.

Key Informant Profiles

Key informants from the Community (see the Appendices for a list of key informants) worked for the following types of organizations and agencies:

- ✓ Social service agencies
- ✓ Local school system and community college
- ✓ Local city and county government
- ✓ Public health agencies
- ✓ Industry
- ✓ Faith community
- ✓ Medical providers

Key Informant Interview Results

The interview questions for each key informant were identical. The questions on the interview instrument are grouped into four major categories for discussion:

1. General opinions regarding health and quality of life in the Community
2. Underserved populations and communities of need
3. Barriers
4. Most important health and quality of life issues

A summary of the leaders' responses by each of these categories follows. Paraphrased quotes are included to reflect some commonly held opinions and direct quotes are employed to emphasize strong feelings associated with the statements. This section of the report summarizes what the key informants said without assessing the credibility of their comments.

1. General Opinions Regarding Health and Quality of Life in the Community

The key informants were asked to rate the health and quality of life in their respective county. They were also asked to provide their opinion whether the health and quality of life had improved, declined or stayed the same over the past few years. Lastly, key informants were asked to provide support for their answers.

Based on a scale from one to ten, informants were asked to rate the overall health of the Community. The scores ranged from five to eight, with an average score of 6.5.

When asked whether the health and quality of life had improved, declined or stayed the same, most informants stated it had improved or stayed about the same. Few respondents indicated it was worse.

Overall, key informants value the Medical Center's impact on community health, recognize its important role, and regard the Medical Center as an asset to the Community.

"Only good experiences at the Medical Center. Good care."

"The Medical Center is an incredible part of community health and has stepped up."

"A very clean facility."

2. Underserved Populations and Communities of Need

Key informants were asked to provide their opinions regarding specific populations or groups of people whose health or quality of life may not be as good as others. We also asked the key informants to provide their opinions as to why they thought these populations were underserved or in need. We asked each key informant to consider the specific populations they serve or those with which they usually work.

Respondents identified three main areas of need: elderly, rural population and those with less educational attainment. A high concentration of elderly people in a population contributes to the rise in health care costs. This in turn causes economic strain for the Community, and especially the elderly that need the increased care. When the elderly suddenly have to choose between eating and paying for their care, this adds to the poverty population and puts more demand on local food banks. Elderly in rural areas have another layer of complexity with having access to transportation to get the medical care they need. With limited resources, and the high demand of needs from the elderly, it increases difficulty in providing quality care to the population as a whole. This can cause stress on those that provide the care, and may cause higher rates in turnover of providers, as well as recruitment problems for new providers for replacement as well as growth. Many of those that are unemployed face the same economic issues as the elderly and further hardships if they are in a rural area.

The key informants were asked what could improve the health and quality of life in the area. There was a wide array of responses. Almost every single respondent presented a unique idea for the question. The following were included:

- Assisting elderly with prescription medication assistance
- Expanding transition care for behavioral health patients
- Expanding dental care for adults
- Addressing the large number of homeless that enter emergency room for treatment
- Offering wellness classes for employees and volunteers
- Furthering relationships with other providers, especially senior care companies

3. Barriers

The key informants were asked what barriers or problems keep Community residents from obtaining necessary health services in their Community. Responses from key informants include lack of education and communication, employment, outreach to rural areas, and high elderly population.

Lack of education and communication surrounding health issues and the availability of health resources is seen as a primary barrier to health services. The high elderly population as well as the unemployment issue cause great strain on a local economy.

Education surrounding access to health services and insurance coverage for the elderly is also identified as a Community need. People do not understand how to access services and there is limited media access for the local Community to receive information regarding education and screenings offered. There is also a sense that health agencies do not cooperate and work together in offering services.

4. Most Important Health and Quality of Life Issues

Key informants were asked to provide their opinion as to the most critical health and quality of life issues facing the county. Again, there was a wide array of responses. The issues commonly identified were: poverty, access to care, dental care, obesity, smoking, cancer, heart disease, and substance abuse.

Key Findings

A summary of themes and key findings provided by the key informants follows:

- It is seen by the Community that a high population of people over age 65 is an issue for the overall health and quality of life for the Community.
- The Medical Center is seen as an asset to the Community. Most persons interviewed recognize the high quality of care available in Rolla as compared to other rural counties in Missouri.
- Substance abuse, smoking, and drug and alcohol abuse are seen as a health and quality of life issue.
- Wellness education can always be expanded to help Community members make choices to improve their health.

Health Issues of Vulnerable Populations

According to Dignity Health's Community Need Index (CNI, See Appendices), the Medical Center's Community has a moderate-level of need. The CNI score is an average of five different barrier scores that measure socioeconomic indicators of each community (income, cultural, education, insurance, and housing). The zip codes in the Community that have the highest need in the Community are listed in *Exhibit 31*.

Exhibit 31					
Phelps County Regional Medical Center					
Zip Codes with Highest Community Need Index					
Zip Code	CNI Score*	Population	City	County	
65409	4.2	353	Rolla	Phelps	
65689	4.0	4,236	Cabool	Texas	
65542	4.0	6,488	Licking	Texas	
65583	3.8	13,230	Waynesville	Pulaski	
65452	3.8	3,348	Crocker	Pulaski	
65401	3.8	32,159	Rolla	Phelps	
65565	3.8	5,550	Steelville	Crawford	
65535	3.8	1,650	Leasburg	Crawford	
65453	3.8	8,614	Cuba	Crawford	
65441	3.8	5,106	Bourbon	Crawford	

* Scale of 1 (Lowest Need) to 5 (Highest Need)
Source: Dignity Health Community Need Index

Information Gaps

This assessment was designed to provide a comprehensive and broad picture of the health in the overall Community served by the Medical Center; however, there may be a number of medical conditions that are not specifically addressed in this report due to various factors, including but not limited to, publically available information or limited Community input.

In addition, certain population groups might not be identifiable or might not be represented in numbers sufficient for independent analysis. Examples include homeless, institutionalized persons, undocumented residents and members of certain ethnic groups who do not speak English or Spanish. Efforts were made to obtain input from these specific populations through key stakeholder interviews.

Prioritization of Identified Health Needs

Priority setting is a required step in the community benefit planning process. The IRS regulations indicate that the Community Health Needs Assessment must provide a prioritized description of the community health needs identified through the CHNA, and include a description of the process and criteria used in prioritizing the health needs.

Using findings obtained through the collection of primary and secondary data, the Medical Center completed an analysis of these to identify community health needs. The following data was analyzed to identify health needs for the Community:

Leading Causes of Death

Leading causes of death and death rates for the Community were compared to U.S. adjusted death rates. Causes of death in which the county rate compared unfavorably to the U.S. adjusted death rate resulted in a health need for the Medical Center.

Health Outcomes and Factors

An analysis of the County Health Rankings health outcomes and factors data was prepared for each county within the Medical Center Community. County rates and measurements for health behaviors, clinical care, social and economic factors, and the physical environment were compared to state benchmarks. County rankings in which the county rate compared unfavorably (by greater than 30 percent of the national benchmark) resulted in an identified health need.

Primary Data

Health needs identified through key informant interviews were included as health needs. Needs for vulnerable populations were separately reported on the analysis in order to facilitate the prioritization process.

Health Needs of Vulnerable Populations

Health needs of vulnerable populations were included for ranking purposes.

To facilitate prioritization of identified health needs, a ranking process was used. Health needs were ranked based on the following five factors, receiving a score between 0 and 5.

- 1) **Ability to evaluate and measure outcomes based on data.**
- 2) **How many people are affected by the issue or size of the issue?** For this factor, ratings were based on the percentage of the Community above or below the Missouri average who are impacted by the identified need. The following scale, in percentage of the Community affected, was utilized: Greater than or equal to 15% more than the Missouri average = 5; Less than 15% but greater than or equal to 10% more than the Missouri average = 4; Less than 10% but greater than or equal to 5% more than the Missouri average = 3; Less than 5% but greater than or equal to the Missouri average = 2; and Less than the Missouri average = 1. Opposite Indicators were scored using an opposite to this scale.*
- 3) **What are the consequences of not addressing this problem?** Identified health needs, which have a high death rate or have a high impact on chronic diseases, received a higher rating.
- 4) **Prevalence of common themes.** The rating for this factor was determined by how many sources of data (Leading Causes of Death, Primary Causes for Inpatient Hospitalization, Health Outcomes and Factors, Facility Management, and Key Informant Interviews) identified the need.
- 5) **Alignment with Medical Center's goals and resources.** The Medical Center engaged a leadership team to review the most significant health needs reported on the prior CHNA as well as in the results of the study and key informant interviews. The leadership team then assigned a score, based on a combination of the below criteria:
 - The degree to which the Medical Center can influence long-term change
 - The identified health need's impact on overall health
 - Current area of hospital focus
 - Established relationships with Community partners to address the health need
 - Organizational capacity and existing infrastructure

Exhibit 32 on the next page shows a summary list of needs that were identified in order of the five rankings. Based on the criteria, the leadership team has identified the following priority areas that will be addressed through Phelps County Regional Medical Center's Implementation Strategy for fiscal year 2017-2019.

- Adult Oral Health
- Mental Health
- Food & Nutrition

* "Opposite Indicators" are when having greater than the Missouri average rather than less is a positive health indicator instead of a negative. For example; under standard assessment, having a greater percentage of the population with obesity is a negative for the community, and thus rated higher in the scale above as a health need. On the other hand, a higher number than the Missouri Average in diabetic screenings, indicates less of a health need for the community and is rated lower because the community would benefit from a greater population being screened for diabetes. These were scored using the opposite of the scale above, where Greater than or equal to 15% Less than the Missouri average = 5; Less than 15% but greater than or equal to 10% Less than the Missouri average = 4, and so on.

Exhibit 32 Phelps County Regional Medical Center Ranking of Community Health Needs						
Health Problem	Ability to evaluate and measure outcomes based on data	How many people are affected by the issue?	What are the consequences of not addressing this problem?	Prevalence of Common Themes	Alignment with Medical Center's goals and resources	Total Score
Dentists, Oral Health	5	5	5	4	5	24
Mental Health Providers	5	5	4	3	5	22
Food & Nutrition	5	2	5	4	5	21
Heart Disease	5	5	4	2	4	20
Cancer	5	4	4	2	4	19
Adult Obesity	5	2	5	2	4	18
Stroke	5	5	3	1	3	17
Primary Care Physicians	5	5	3	2	2	17
Lung Disease	5	4	2	1	4	16
Adult Smoking	5	4	3	2	2	16
Physical Inactivity	5	3	3	1	3	15
Alcohol-Impaired Driving Deaths	5	3	3	1	3	15
Excessive Drinking	5	4	3	2	1	15
Children in Poverty	5	3	3	2	1	14
Access to Exercise Opportunities	5	5	1	1	2	14
Preventable Hospital Stays	5	3	2	1	2	13
Mammography Screening	5	4	1	1	1	12
Children in Single-Parent Households	5	2	2	1	2	12
Substance Abuse	3	3	2	1	3	12
Uninsured Adults	5	3	1	1	2	12
Teen Birth Rate	5	4	1	1	1	12
Sexually Transmitted Infections	5	2	2	1	1	11
Diabetic Screen Rate	5	3	1	1	1	11
Lack of Health Knowledge/Education	2	3	1	1	3	10
Violent Crime Rate	5	1	1	1	1	9

Health Care Resources

The availability of health resources is a critical component to the health of a community's residents and a measure of the soundness of the area's health care delivery system. An adequate number of health care facilities and health care providers is vital for sustaining a community's health status. Fewer health care facilities and health care providers can impact the timely delivery of services. A limited supply of health resources, especially providers, results in the limited capacity of the health care delivery system to absorb charity and indigent care as there are fewer providers upon which to distribute the burden of indigent care. This section addresses the availability of health care resources to the residents in the Community.

Hospitals and Health Centers

The Medical Center has 222 beds and is one of four acute care hospitals located in the Community. Residents of the Community also take advantage of services provided by hospitals in neighboring counties. *Exhibit 33* summarizes acute care hospital services available:

Exhibit 33					
Phelps County Regional Medical Center Community					
Summary of Acute Care Hospitals					
Facility	Address	County	Miles from Rolla, MO	Beds*	Facility Type
Phelps County Regional Medical Center	1000 West Tenth Street Rolla, MO 65401	Phelps	0.0	222	Short Term/Acute Care
Salem Memorial District Hospital	35629 Highway 72 Salem, MO 65560	Dent	24.0	25	Critical Access
Missouri Baptist Hospital Sullivan	751 Sappington Bridge Road Sullivan, MO 63080	Crawford	40.5	35	Critical Access
Texas County Memorial Hospital	1333 S. Sam Houston Blvd Houston, MO 65483	Texas	48.5	47	Short Term/Acute Care

* Includes subprovider beds, excludes skilled nursing facility beds
 Source: US Hospital Finder - <http://www.ushospitalfinder.com/>

Other Health Care Facilities and Providers

Short-term acute care hospital services are not the only health services available to members of the Medical Center's Community. *Exhibit 34* provides a listing of community health centers:

Exhibit 34			
Phelps County Regional Medical Center Community			
Summary of Other Health Care Facilities			
Facility	Address	County	Facility Type
Your Community Health Center	1050 W 10th Street, Ste 480 Rolla, MO 65401	Phelps	Community Health Center
Richland Care Center	400 Tricounty Lane, Richland, MO 65556	Pulaski	Community Health Center
Central Ozarks Medical Center - Richland	304 W Washington Ave Richland, MO 65556	Pulaski	Community Health Center
* Primary Health Network			
Source: Health Resources and Services Administration - http://findahealthcenter.hrsa.gov/#			

Other facilities in the Community include rural health clinics, home health, hospice, adult day care, ambulatory surgery centers, rehabilitation agencies, psychiatric residential treatment facilities and private duty nursing providers.

APPENDICES

Acknowledgements

The CHNA Committee was the convening body for this project. Many other individuals including Community residents, key informants and community-based organizations contributed to this Community Health Needs Assessment.

Project Steering Committee

Special thanks to all of the following committee members for their time and commitment to this project:

Cindy Mitchell, Director Applications and Analytics

Leah Isakson, Administrative Director, Organizational Development & Innovations

Tracy Limmer, Community Relations Manager

Key Informants

Thank you to the following individuals who participated in our key informant interview process:

Jodi Waltman, Director of Phelps – Maries County Health Department

Ron Smith, City of Rolla Fire Department

John Butz, Administrator, City of Rolla

Brenda Barfield, Case Management, Phelps County Regional Medical Center

Walter Werner, Long term Medical Center volunteer

Christina Maxwell, Home Health, Phelps County Regional Medical Center

Amy Beechner-McCarthy, CEO, Your Community Health Center

Dawn Koenig, Immanuel Lutheran School

Father Charles Pardee, St. Patrick Catholic Church

Walter Branson, Vice Chancellor, Missouri University of Science & Technology

Lisa Esci-Davis, Tri-Rivers Family Planning

SOURCES

DATA TYPE	SOURCE	YEAR(S)
Discharges by Zip Code	Hospital	FY 2015
Community Details: Population & Demographics	U.S. Census Bureau, American Community Survey http://factfinder.census.gov	2010 - 2014
Community Details: Urban/Rural Population	U.S. Census Bureau, American Community Survey http://factfinder.census.gov	2010
Socioeconomic Characteristics: Income	U.S. Census Bureau, American Community Survey http://factfinder.census.gov	2010 - 2014
Socioeconomic Characteristics: Employment by Major Industry	US Department of Labor , Bureau of Labor Statistics http://www.bls.gov/cew/datatoc.htm	2014
Socioeconomic Characteristics: Top Employers by County	LocationOne Information System http://www.locationone.com	2015
Socioeconomic Characteristics: Unemployment	US Department of Labor, Bureau of Labor Statistics http://www.bls.gov	2005 - 2014
Socioeconomic Characteristics: Poverty	U.S. Census Bureau, American Community Survey http://factfinder.census.gov	2010 - 2014
Socioeconomic Characteristics: Uninsured	U.S. Census Bureau, American Community Survey http://factfinder.census.gov	2010 - 2014
Socioeconomic Characteristics: Medicaid	U.S. Census Bureau, American Community Survey http://factfinder.census.gov	2010 - 2014
Socioeconomic Characteristics: Education	U.S. Census Bureau, American Community Survey http://factfinder.census.gov	2010 - 2014
Physical Environment: Grocery Store Access	U.S. Census Bureau, County Business Patterns http://www.communitycommons.org/	2013
Physical Environment: Food Access/Food Deserts	Community Commons via US Department of Agriculture http://www.communitycommons.org/	2010
Physical Environment: Recreation/Fitness Access	Community Commons via U.S. Census Bureau, County Business Patterns http://www.communitycommons.org/	2013
Physical Environment: Physical Inactivity	Community Commons via Centers for Disease Control & Prevention http://www.communitycommons.org/	2012
Clinical Care: Access to Primary Care	Community Commons via US Department of Health & Human Services http://www.communitycommons.org/	2012
Clinical Care: Lack of Source to Primary Care	Community Commons via Centers for Disease Control & Prevention http://www.communitycommons.org/	2011 - 2012
Clinical Care: Professional Shortage Area	Community Commons via US Department of Health & Human Services http://www.communitycommons.org/	2015
Critical Care: Preventable Hospital Events	Community Commons via Dartmouth College Institute for Health Policy http://www.communitycommons.org/	2012
Leading Causes of Death	Community Commons via Centers for Disease Control and Prevention http://www.communitycommons.org/	2009 - 2013
Health Outcomes and Factors	County Health Rankings http://www.countyhealthrankings.org/	2012 & 2015
Health Outcome Details	Community Commons http://www.communitycommons.org/	2006 - 2012
Health Care Resources: Hospitals	US Hospital Finder http://www.ushospitalfinder.com/	2015
Health Care Resources: Hospitals Cost Reports	Cost Report Data https://www.costreportdata.com/	2014
Health Care Resources: Community Health Centers	Health Resources and Services Administration http://findahealthcenter.hrsa.gov/#	2015
Zip Codes with Highest CNI	Dignity Health Community Needs Index http://cni.chw-interactive.org/	2015

ANALYSIS OF DATA

Phelps County Regional Medical Center Analysis of CHNA Data Analysis of Health Status-Leading Causes of Death (2015)					
	U.S. Crude Rates	Missouri Crude Rates	(A) County Crude Rate	(B) 10% Increase of Missouri Crude Rate	If County Rate is Greater Than 10% over Missouri Rate, (A) > (B), then "Health Need"
Crawford County					
Heart Disease	193.0	231.1	365.5	254.2	Health Need
Cancer	185.4	211.3	263.6	232.4	Health Need
Ischaemic Heart Disease	120.9	149.3	287.0	164.2	Health Need
Lung Disease	45.7	59.8	66.3	65.8	Health Need
Stroke	41.4	49.9	59.0	54.9	Health Need
Dent County					
Heart Disease	193.0	231.1	281.1	254.2	Health Need
Cancer	185.4	211.3	287.5	232.4	Health Need
Ischaemic Heart Disease	120.9	149.3	186.6	164.2	Health Need
Lung Disease	45.7	59.8	106.1	65.8	Health Need
Stroke	41.4	49.9	70.3	54.9	Health Need
Maries County					
Heart Disease	193.0	231.1	320.9	254.2	Health Need
Cancer	185.4	211.3	261.5	232.4	Health Need
Ischaemic Heart Disease	120.9	149.3	151.6	164.2	
Lung Disease	45.7	59.8	57.1	65.8	
Stroke	41.4	49.9	63.7	54.9	Health Need
Phelps County					
Heart Disease	193.0	231.1	243.2	254.2	
Cancer	185.4	211.3	183.1	232.4	
Ischaemic Heart Disease	120.9	149.3	176.4	164.2	Health Need
Lung Disease	45.7	59.8	56.1	65.8	
Stroke	41.4	49.9	65.5	54.9	Health Need
Pulaski County					
Heart Disease	193.0	231.1	131.1	254.2	
Cancer	185.4	211.3	124.3	232.4	
Ischaemic Heart Disease	120.9	149.3	93.9	164.2	
Lung Disease	45.7	59.8	36.9	65.8	
Stroke	41.4	49.9	30.8	54.9	
Texas County					
Heart Disease	193.0	231.1	259.3	254.2	Health Need
Cancer	185.4	211.3	225.3	232.4	
Ischaemic Heart Disease	120.9	149.3	169.5	164.2	Health Need
Lung Disease	45.7	59.8	92.1	65.8	Health Need
Stroke	41.4	49.9	61.9	54.9	Health Need

The crude rate is shown per 100,000 residents. Please refer to Exhibit 21 for more information

Phelps County Regional Medical Center Analysis of CHNA Data <i>Analysis of Health Outcomes and Factors (2015)</i>					
	U.S. Crude Rates	Missouri Crude Rates	(A) County Crude Rate	(B) 10% Increase of Missouri Crude Rate	If County Rate is Greater Than 10% over Missouri Rate, (A) > (B), then "Health Need"
Crawford County					
Adult Smoking	14.0%	23.0%	40.0%	25.3%	Health Need
Adult Obesity	25.0%	31.0%	33.0%	34.1%	
Food Environment Index	8.4	7	7.5	8	
Physical Inactivity	20.0%	26.0%	26.0%	28.6%	
Access to Exercise Opportunities [^]	92.0%	77.0%	68.0%	84.7%	
Excessive Drinking	10.0%	17.0%	N/A	18.7%	Health Need
Alcohol-Impaired Driving Deaths	14.0%	35.0%	37.0%	38.5%	
Sexually Transmitted Infections	138	465	193	512	
Teen Birth Rate	20	40	54	44	Health Need
Uninsured	11.0%	16.0%	19.0%	17.6%	Health Need
Primary Care Physicians	1045	1439	8277	1583	Health Need
Dentists	1377	1920	8181	2112	Health Need
Mental Health Providers	386	632	2727	695	Health Need
Preventable Hospital Stays	41	65	60	72	
Diabetic Screen Rate [^]	90.0%	86.0%	86.0%	77.4%	
Mammography Screening [^]	70.7%	62.2%	61.3%	56.0%	
Children in Poverty	13%	22%	30%	24%	Health Need
Children in Single-Parent Households	20.0%	34.0%	37.0%	37.4%	
Violent Crime Rate	59	452	215	497	
Dent County					
Adult Smoking	14.0%	23.0%	35.0%	25.3%	Health Need
Adult Obesity	25.0%	31.0%	35.0%	34.1%	Health Need
Food Environment Index	8.4	7	7.1	8	
Physical Inactivity	20.0%	26.0%	34.0%	28.6%	Health Need
Access to Exercise Opportunities [^]	92.0%	77.0%	65.0%	84.7%	
Excessive Drinking	10.0%	17.0%	N/A	18.7%	Health Need
Alcohol-Impaired Driving Deaths	14.0%	35.0%	16.0%	38.5%	
Sexually Transmitted Infections	138	465	185	512	
Teen Birth Rate	20	40	52	44	Health Need
Uninsured	11.0%	16.0%	20.0%	17.6%	Health Need
Primary Care Physicians	1045	1439	3129	1583	Health Need
Dentists	1377	1920	2247	2112	Health Need
Mental Health Providers	386	632	1049	695	Health Need
Preventable Hospital Stays	41	65	83	72	Health Need
Diabetic Screen Rate [^]	90.0%	86.0%	83.0%	77.4%	
Mammography Screening [^]	70.7%	61.3%	50.7%	55.2%	Health Need
Children in Poverty	13%	22%	34%	24%	Health Need
Children in Single-Parent Households	20.0%	34.0%	35.0%	37.4%	
Violent Crime Rate	59	452	198	497	

[^] Opposite Indicator signifying that an increase is a positive outcome and a decrease is a negative.

Phelps County Regional Medical Center Analysis of CHNA Data Analysis of Health Outcomes and Factors (2015)					
	U.S. Crude Rates	Missouri Crude Rates	(A) County Crude Rate	(B) 10% Increase of Missouri Crude Rate	If County Rate is Greater Than 10% over Missouri Rate, (A) > (B), then "Health Need"
Maries County					
Adult Smoking	14.0%	23.0%	N/A	25.3%	Health Need
Adult Obesity	25.0%	31.0%	29.0%	34.1%	
Food Environment Index	8.4	7	8.1	8	Health Need
Physical Inactivity	20.0%	26.0%	29.0%	28.6%	Health Need
Access to Exercise Opportunities^	92.0%	77.0%	18.0%	84.7%	
Excessive Drinking	10.0%	17.0%	N/A	18.7%	Health Need
Alcohol-Impaired Driving Deaths	14.0%	35.0%	55.0%	38.5%	Health Need
Sexually Transmitted Infections	138	465	100	512	
Teen Birth Rate	20	40	40	44	
Uninsured	11.0%	16.0%	19.0%	17.6%	Health Need
Primary Care Physicians	1045	1439	9014	1583	Health Need
Dentists	1377	1920	3006	2112	Health Need
Mental Health Providers	386	632	3006	695	Health Need
Preventable Hospital Stays	41	65	70	72	
Diabetic Screen Rate^	90.0%	86.0%	85.0%	77.4%	
Mammography Screening^	70.7%	61.3%	50.8%	55.2%	Health Need
Children in Poverty	13%	22%	27%	24%	Health Need
Children in Single-Parent Households	20.0%	34.0%	27.0%	37.4%	
Violent Crime Rate	59	452	309	497	
Phelps County					
Adult Smoking	14.0%	23.0%	27.0%	25.3%	Health Need
Adult Obesity	25.0%	31.0%	32.0%	34.1%	
Food Environment Index	8.4	7	6.9	8	
Physical Inactivity	20.0%	26.0%	28.0%	28.6%	
Access to Exercise Opportunities^	92.0%	77.0%	65.0%	84.7%	
Excessive Drinking	10.0%	17.0%	14.0%	18.7%	
Alcohol-Impaired Driving Deaths	14.0%	35.0%	28.0%	38.5%	
Sexually Transmitted Infections	138	465	242	512	
Teen Birth Rate	20	40	40	44	
Uninsured	11.0%	16.0%	18.0%	17.6%	Health Need
Primary Care Physicians	1045	1439	957	1583	
Dentists	1377	1920	2358	2112	Health Need
Mental Health Providers	386	632	393	695	
Preventable Hospital Stays	41	65	59	72	
Diabetic Screen Rate^	90.0%	86.0%	81.0%	77.4%	
Mammography Screening^	70.7%	61.3%	64.0%	55.2%	
Children in Poverty	13%	22%	23%	24%	
Children in Single-Parent Households	20.0%	34.0%	28.0%	37.4%	
Violent Crime Rate	59	452	316	497	

^ Opposite Indicator signifying that an increase is a positive outcome and a decrease is a negative.

Pulaski County					
Pulaski County					
	U.S. Crude Rates	Missouri Crude Rates	(A) County Crude Rate	(B) 10% Increase of Missouri Crude Rate	If County Rate is Greater Than 10% over Missouri Rate, (A) > (B), then "Health Need"
Pulaski County					
Adult Smoking	14.0%	23.0%	23.0%	25.3%	
Adult Obesity	25.0%	31.0%	34.0%	34.1%	
Food Environment Index	8.4	7	6.6	8	
Physical Inactivity	20.0%	26.0%	27.0%	28.6%	
Access to Exercise Opportunities [^]	92.0%	77.0%	62.0%	84.7%	
Excessive Drinking	10.0%	17.0%	22.0%	18.7%	Health Need
Alcohol-Impaired Driving Deaths	14.0%	35.0%	47.0%	38.5%	Health Need
Sexually Transmitted Infections	138	465	599	512	Health Need
Teen Birth Rate	20	40	33	44	
Uninsured	11.0%	16.0%	16.0%	17.6%	
Primary Care Physicians	1045	1439	3804	1583	Health Need
Dentists	1377	1920	977	2112	
Mental Health Providers	386	632	611	695	
Preventable Hospital Stays	41	65	50	72	
Diabetic Screen Rate [^]	90.0%	86.0%	83.0%	77.4%	
Mammography Screening [^]	70.7%	61.3%	48.7%	55.2%	Health Need
Children in Poverty	13%	22%	17%	24%	
Children in Single-Parent Households	20.0%	34.0%	26.0%	37.4%	
Violent Crime Rate	59	452	319	497	
Texas County					
Texas County					
Adult Smoking	14.0%	23.0%	31.0%	25.3%	Health Need
Adult Obesity	25.0%	31.0%	32.0%	34.1%	
Food Environment Index	8.4	7	7.0	8	
Physical Inactivity	20.0%	26.0%	35.0%	28.6%	Health Need
Access to Exercise Opportunities [^]	92.0%	77.0%	46.0%	84.7%	
Excessive Drinking	10.0%	17.0%	11.0%	18.7%	
Alcohol-Impaired Driving Deaths	14.0%	35.0%	17.0%	38.5%	
Sexually Transmitted Infections	138	465	233	512	
Teen Birth Rate	20	40	56	44	Health Need
Uninsured	11.0%	16.0%	21.0%	17.6%	Health Need
Primary Care Physicians	1045	1439	1985	1583	Health Need
Dentists	1377	1920	6409	2112	Health Need
Mental Health Providers	386	632	2331	695	Health Need
Preventable Hospital Stays	41	65	76	72	Health Need
Diabetic Screen Rate [^]	90.0%	86.0%	80.0%	77.4%	
Mammography Screening [^]	70.7%	61.3%	52.2%	55.2%	Health Need
Children in Poverty	13%	22%	38%	24%	Health Need
Children in Single-Parent Households	20.0%	34.0%	32.0%	37.4%	
Violent Crime Rate	59	452	81	497	

[^] Opposite Indicator signifying that an increase is a positive outcome and a decrease is a negative.

KEY INFORMANT INTERVIEW PROTOCOL



**COMMUNITY HEALTH NEEDS ASSESSMENT (CHNA)
KEY INFORMANT INTERVIEW QUESTIONS
UPDATED 10/23/15**

Good Morning/Afternoon. My name is _____, from BKD. Thank you for taking time out of your busy day to speak with me. I'll try to keep our time to approximately 45 minutes although once we get into the interview it may take a little longer.

Phelps County Regional Medical Center has retained BKD, an external audit and consulting firm, to assist in conducting a Community Health Needs Assessment. As you know, the Medical Center is committed to making a healthy difference in the lives of the members of our community. While the Community Health Needs Assessment is an IRS requirement, the Medical Center is first and foremost committed to identifying and addressing the top healthcare needs in Rolla and surrounding areas.

The first phase of a Community Health Needs Assessment includes interviewing key informants in the healthcare community who represent the broad interest of the community, populations of need, or persons with specialized knowledge in public health. You have been identified as such a person and we again greatly appreciate you taking a few minutes of your time to help the Medical Center identify and address the top healthcare needs of the community. The themes that emerge from these interviews will be summarized and made available to the public; however, individual interviews will be kept confidential.

Name: _____

Organization/Title: _____

Of years living in the community: _____

of years in current position: _____

E-mail address: _____

To get us started, can you tell me briefly about the work that you and your organization do in the community?

Thank you. Next I'll be asking you a series of questions about health and quality of life in _____. As you consider these questions, keep in mind the broad definition of "health" adopted by the World Health Organization: "Health is a state of complete physical, mental, and social well-being and not merely the absence of disease or infirmity", while sharing in local perspectives you have from your current position and from experiences in this community.

1.) Rank the overall health and quality of life in _____ County from 1-10 compared to what you would think of as a "10" or perfect health:

■



2.) Has health and quality of life in the county improved, stayed the same, or declined the past few years? Why?

3.) Are there people or groups of people in _____ County that are particularly vulnerable or where the health or quality of life may not be as good as others? If so, which people and why?

4.) What are the barriers to health and quality of life issues in _____ County?

5.) What are the most critical health and quality of life issues in _____ County?

6.) What needs to be done to address these issues?

7.) In your opinion, what else will improve the health and quality of life in _____ County?

8.) What is your assessment of the health resources available to the community?

9.) Are there any health services that are not offered locally that are needed services in the community?

10.) Our last Community Health Needs Assessment identified several needs (list out): Do you believe these needs are still an issue?

11.) Do you have any particular comments on the Medical Center as it relates to servicing the health and quality of life needs of the community?

12.) Is there anyone else that you feel we should be interviewing as part of this Community Health Needs Assessment, and if so, whom?

Thank you so much for sharing your concerns and perspectives on the health needs in our community. The information you have provided will contribute to develop a better understanding about factors impacting health and quality of life in _____ County. Before we conclude the interview,

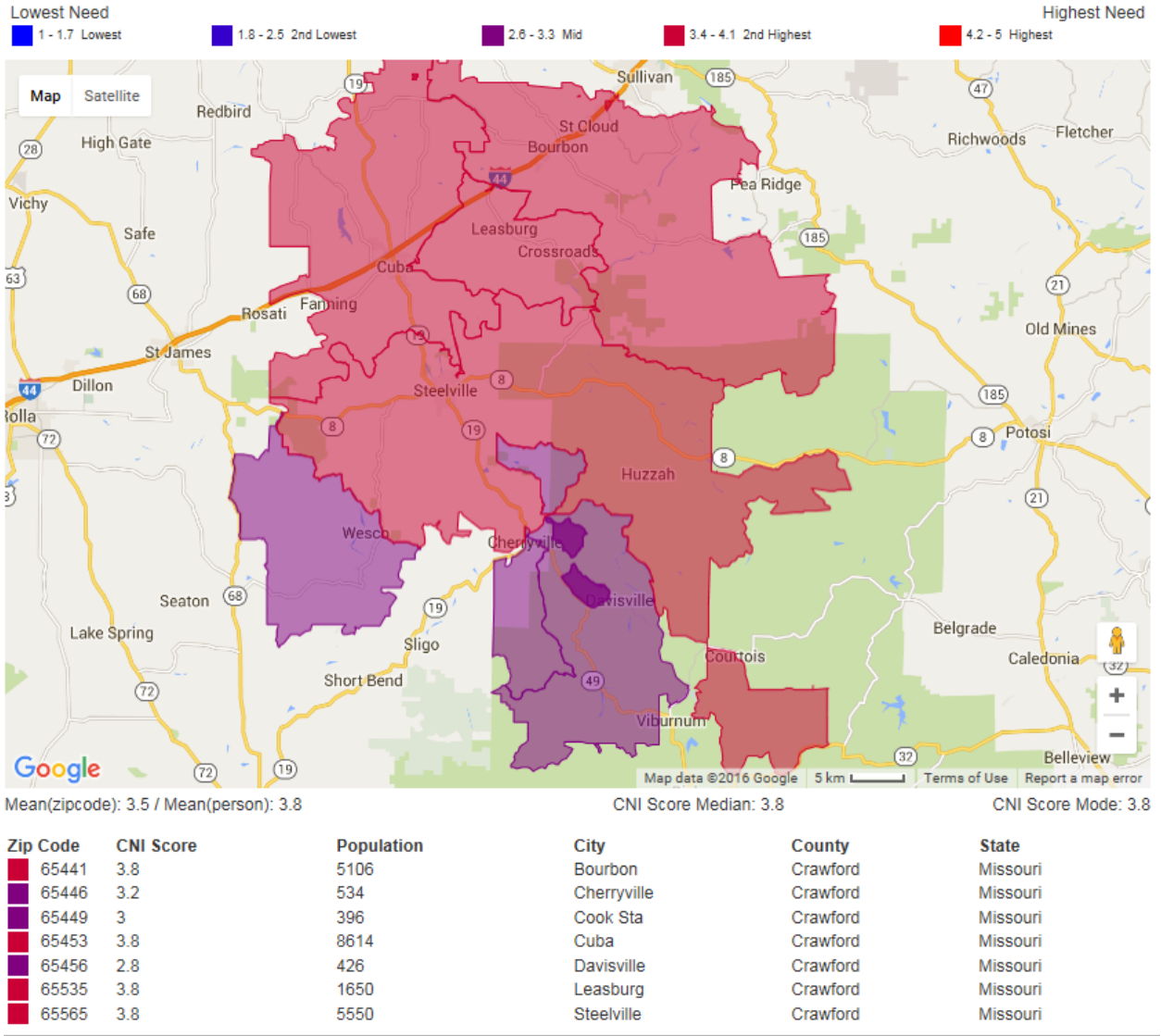
Is there anything else you would like to add?

As a reminder, summary results will be made available by the Medical Center and used to develop a community-wide health improvement plan (also known as a Community Health Needs Assessment).

Thanks again for your time. It's been a pleasure to meet you.

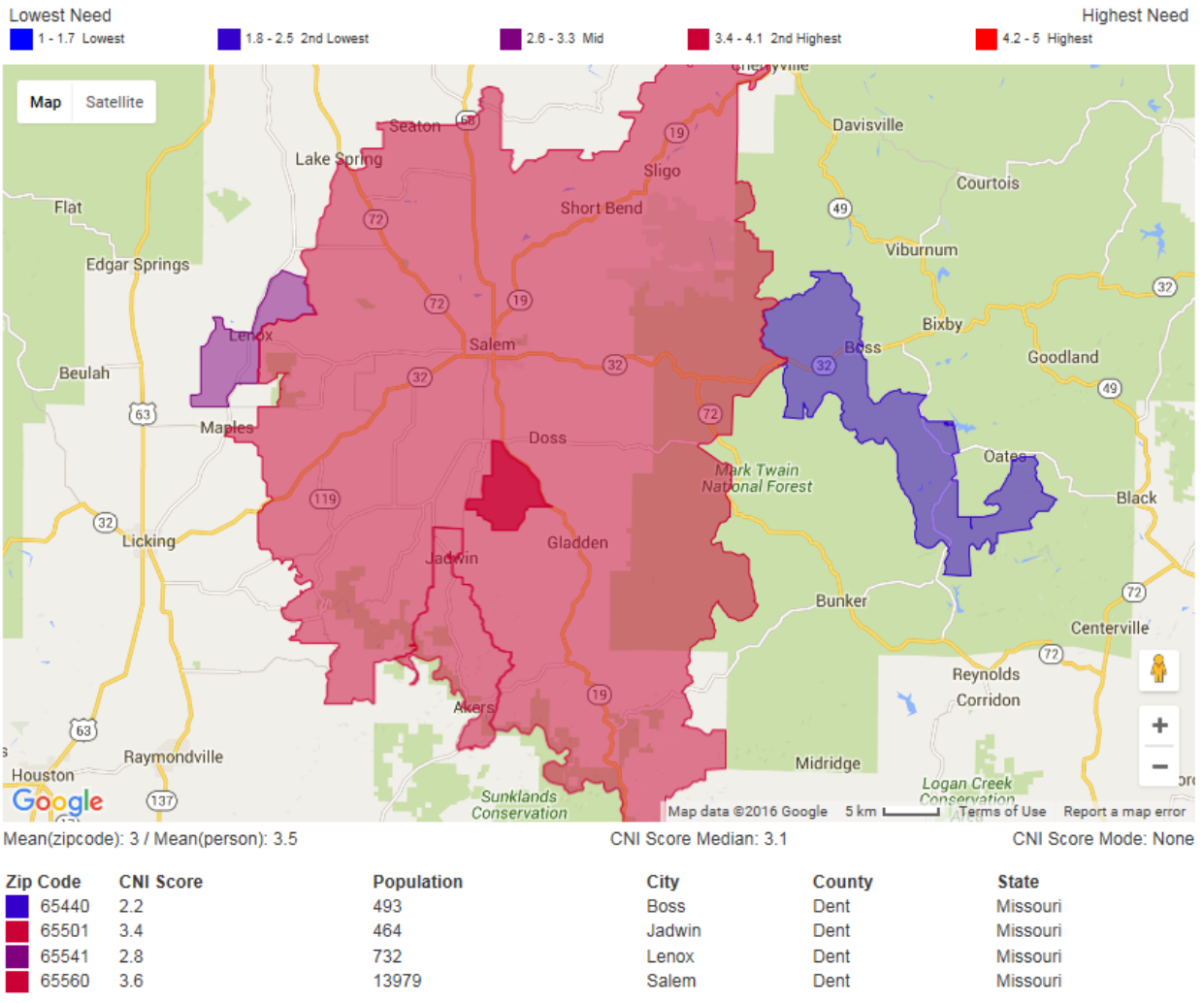
DIGNITY HEALTH COMMUNITY HEALTH NEED INDEX REPORTS

Crawford County Community Needs Index (CNI) Score by Zip Code



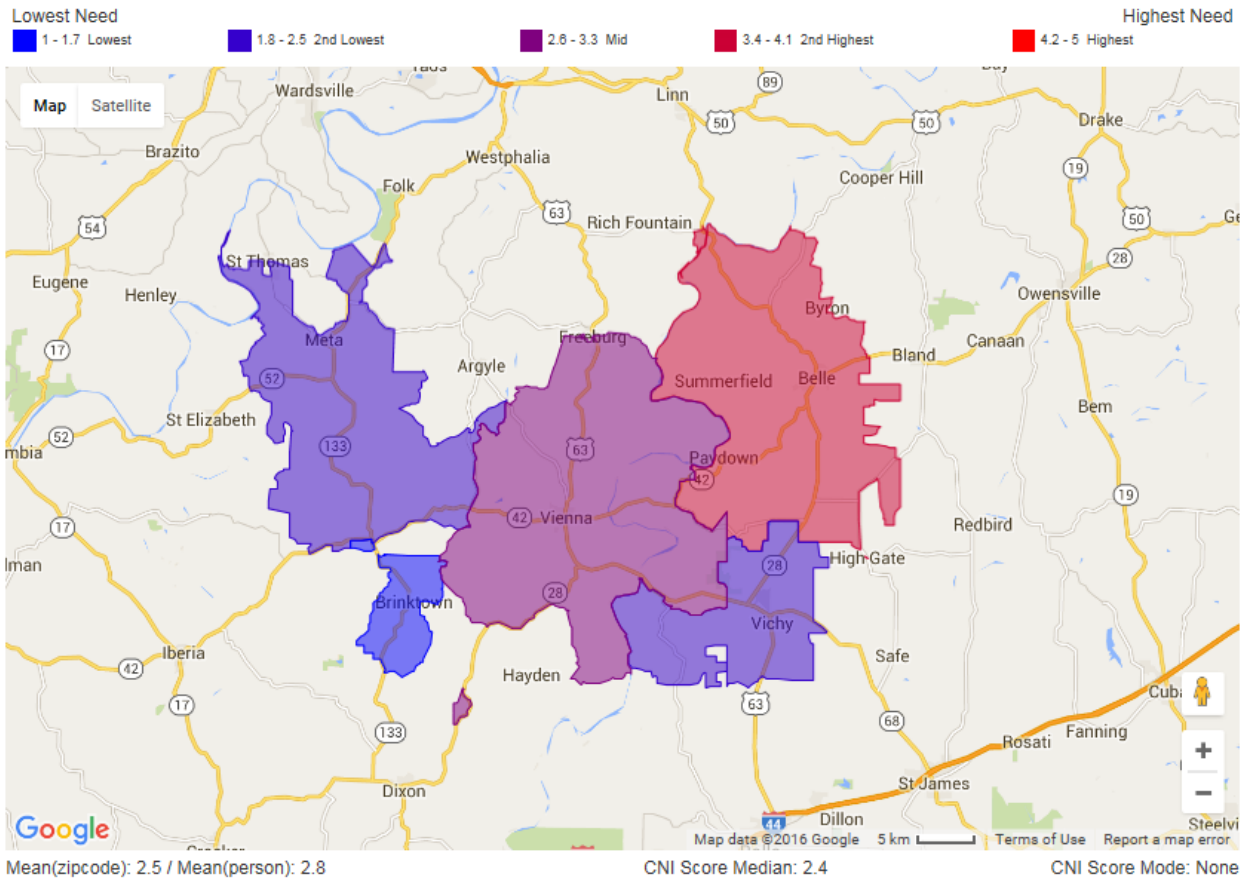
Source: Truven Health Analytics, 2015; Insurance Coverage Estimates, 2015; The Nielson Company, 2015; and Community Need Index, 2015

Dent County Community Needs Index (CNI) Score by Zip Code



Source: Truven Health Analytics, 2015; Insurance Coverage Estimates, 2015; The Nielson Company, 2015; and Community Need Index, 2015

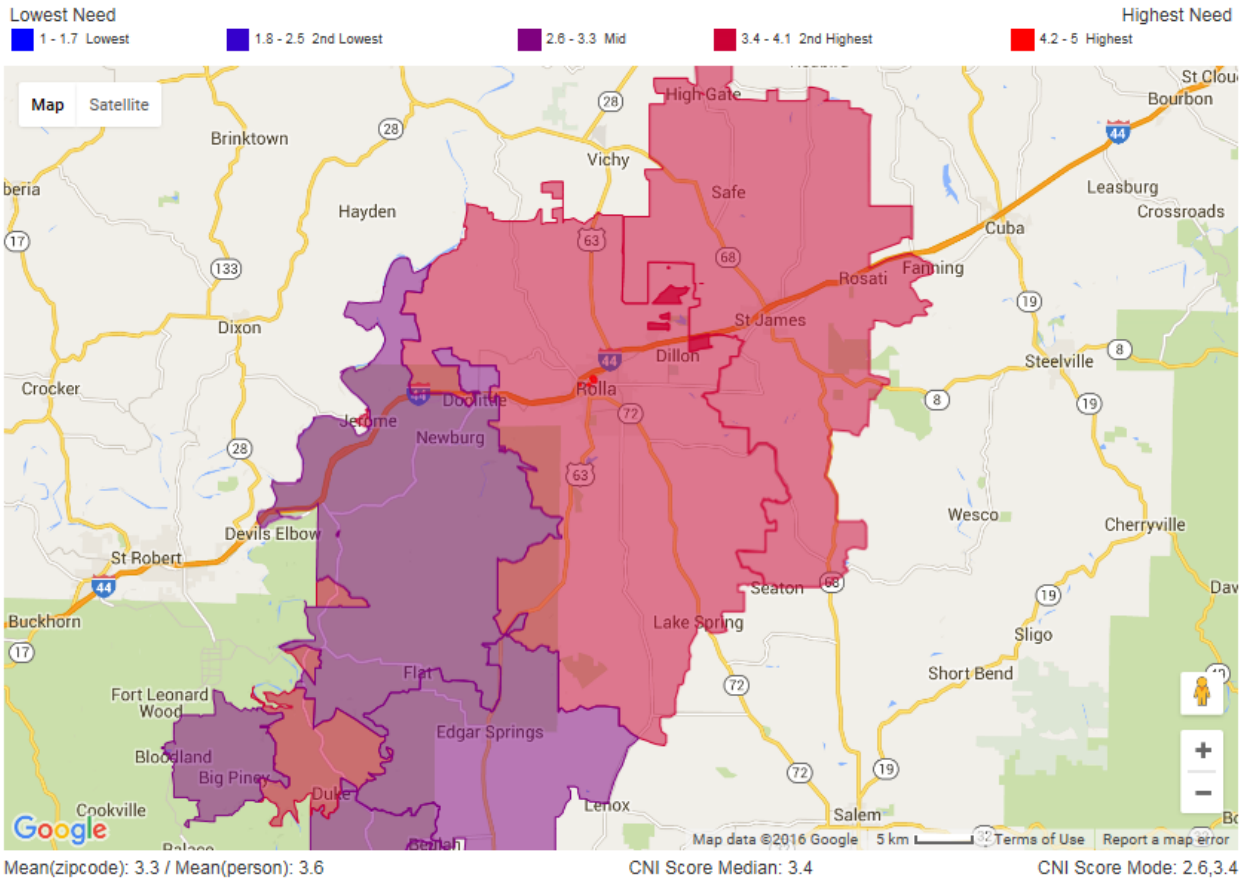
Maries County Community Needs Index (CNI) Score by Zip Code



Zip Code	CNI Score	Population	City	County	State
65013	3.4	3301	Belle	Maries	Missouri
65058	2	1168	Meta	Maries	Missouri
65443	1.6	624	Brinktown	Maries	Missouri
65580	2.4	913	Vichy	Maries	Missouri
65582	3	2029	Vienna	Maries	Missouri

Source: Truven Health Analytics, 2015; Insurance Coverage Estimates, 2015; The Nielson Company, 2015; and Community Need Index, 2015

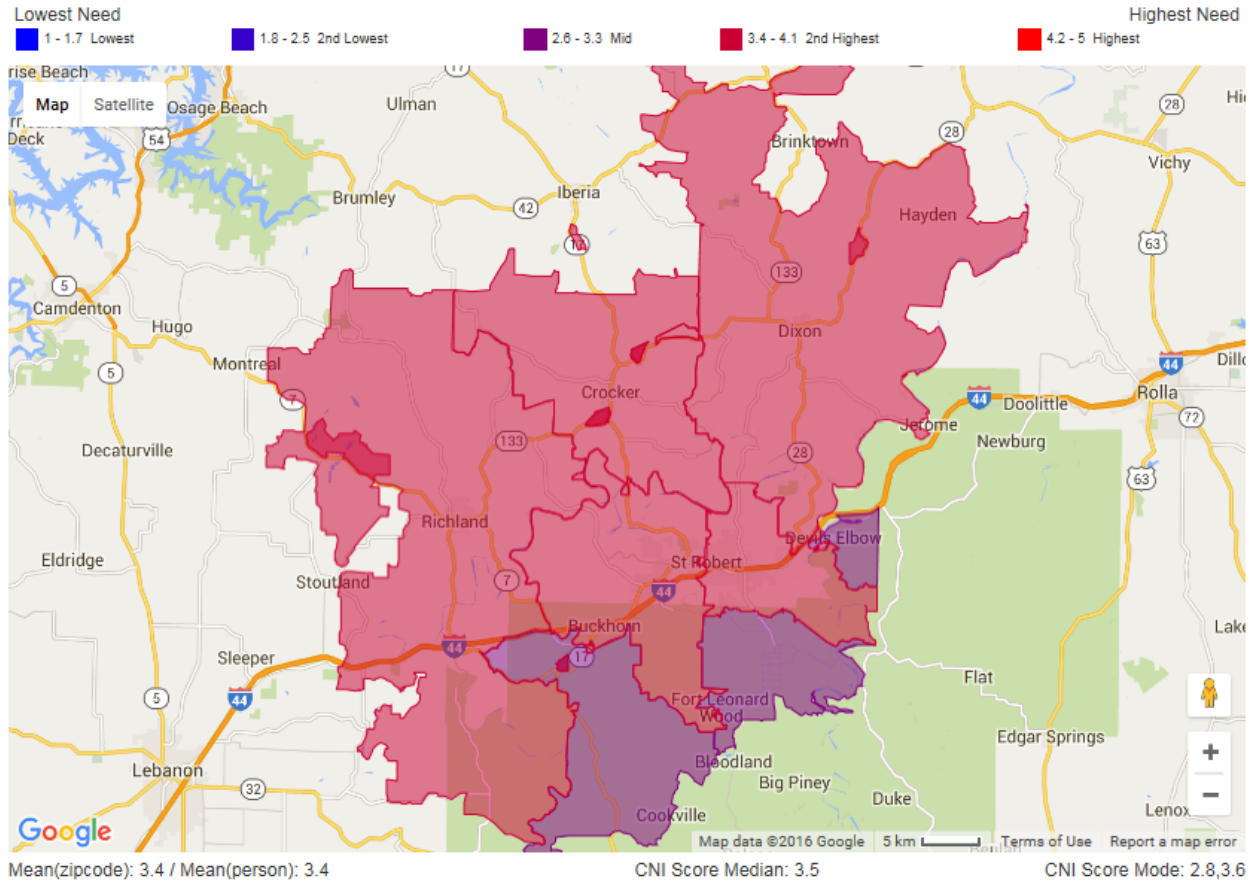
Phelps County Community Needs Index (CNI) Score by Zip Code



Zip Code	CNI Score	Population	City	County	State
65401	3.8	32159	Rolla	Phelps	Missouri
65409	4.2	353	Rolla	Phelps	Missouri
65436	2.6	136	Beulah	Phelps	Missouri
65461	3.4	253	Duke	Phelps	Missouri
65462	2.6	1449	Edgar Springs	Phelps	Missouri
65529	3.6	218	Jerome	Phelps	Missouri
65550	3	3014	Newburg	Phelps	Missouri
65559	3.4	9146	Saint James	Phelps	Missouri

Source: Truven Health Analytics, 2015; Insurance Coverage Estimates, 2015; The Nielson Company, 2015; and Community Need Index, 2015

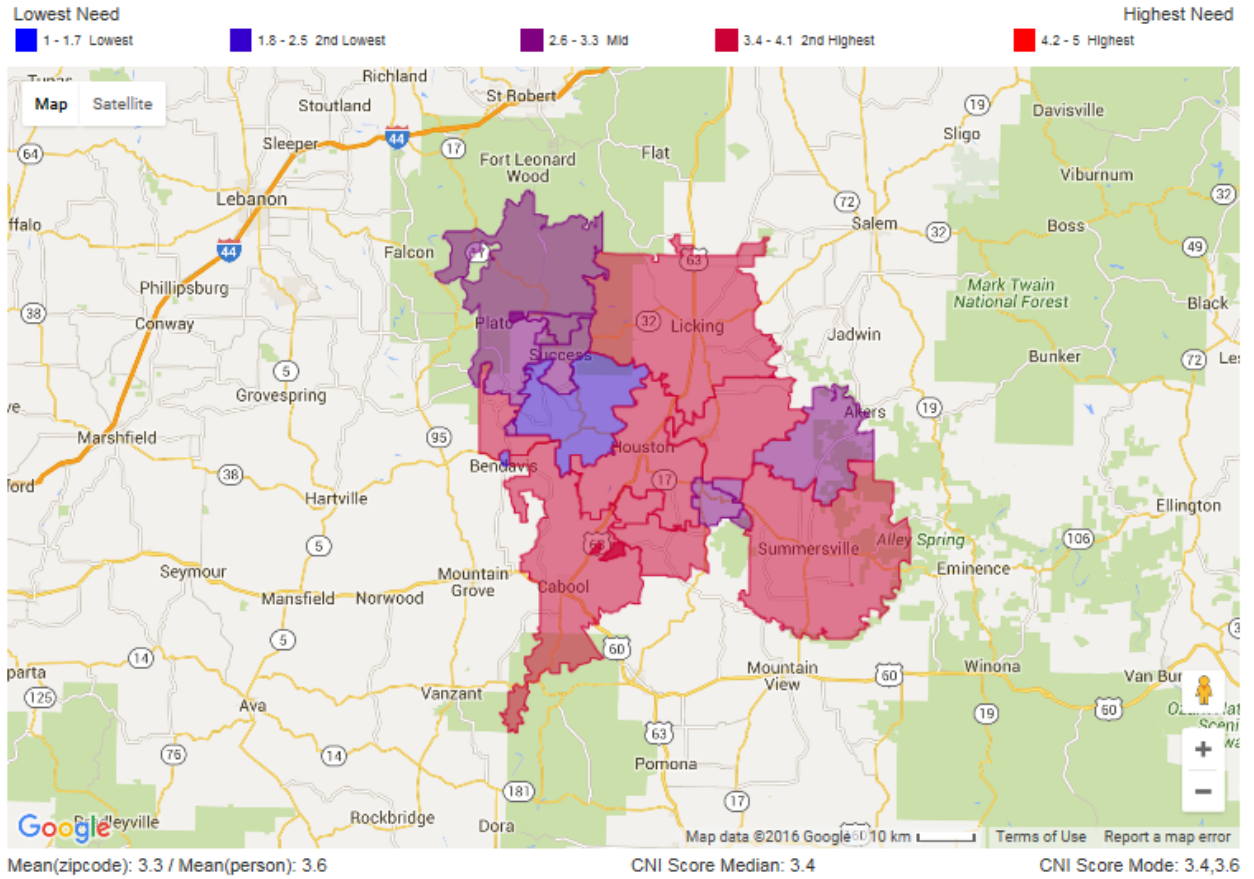
Pulaski County Community Needs Index (CNI) Score by Zip Code



Zip Code	CNI Score	Population	City	County	State
65452	3.8	3348	Crocker	Pulaski	Missouri
65457	2.8	302	Devils Elbow	Pulaski	Missouri
65459	3.4	7357	Dixon	Pulaski	Missouri
65473	2.8	15557	Fort Leonard Wood	Pulaski	Missouri
65534	3	1071	Laquey	Pulaski	Missouri
65556	3.6	5640	Richland	Pulaski	Missouri
65583	3.8	13230	Waynesville	Pulaski	Missouri
65584	3.6	10784	Saint Robert	Pulaski	Missouri

Source: Truven Health Analytics, 2015; Insurance Coverage Estimates, 2015; The Nielson Company, 2015; and Community Need Index, 2015

Texas County Community Needs Index (CNI) Score by Zip Code



Zip Code	CNI Score	Population	City	County	State
65444	2.4	1057	Bucyrus	Texas	Missouri
65464	3.4	484	Elk Creek	Texas	Missouri
65468	3	107	Eunice	Texas	Missouri
65479	3.2	268	Hartshorn	Texas	Missouri
65483	3.6	4747	Houston	Texas	Missouri
65484	3.4	171	Huggins	Texas	Missouri
65542	4	6488	Licking	Texas	Missouri
65552	3	1924	Plato	Texas	Missouri
65555	3.6	1154	Raymondville	Texas	Missouri
65557	2.6	288	Roby	Texas	Missouri
65564	3.4	216	Solo	Texas	Missouri
65570	2.8	458	Success	Texas	Missouri
65571	3.6	1439	Summersville	Texas	Missouri
65589	3.2	280	Yukon	Texas	Missouri
65689	4	4236	Cabool	Texas	Missouri

Source: Truven Health Analytics, 2015; Insurance Coverage Estimates, 2015; The Nielson Company, 2015; and Community Need Index, 2015

COUNTY HEALTH RANKINGS

CRAWFORD COUNTY					
Phelps County Regional Medical Center Community					
County Health Rankings - Health Factors					
	Crawford County 2012	Crawford County 2015	Missouri 2015	Top US Performers 2015	
Health Behaviors*					
	70	103	↑		
Adult smoking - Percent of adults that report smoking at least 100 cigarettes and that they currently smoke	N/A	40.0%	—	23.0%	14.0%
Adult obesity - Percent of adults that report a BMI >= 30	32.0%	33.0%	↑	31.0%	25.0%
Food environment index ^ - Index of factors that contribute to a healthy food environment, 0 (worst) to 10 (best)	N/A	7.5	—	7.0	8.4
Physical inactivity - Percent of adults aged 20 and over reporting no leisure time physical activity	29.0%	26.0%	↓	26.0%	20.0%
Access to exercise opportunities ^ - Percentage of population with adequate access to locations for physical activity	N/A	68.0%	—	77.0%	92.0%
Excessive drinking - Percent of adults that report excessive drinking in the past 30 days	15.0%	N/A	—	17.0%	10.0%
Alcohol-impaired driving deaths - % of motor vehicle crash deaths with alcohol involvement	N/A	37.0%	—	35.0%	14.0%
Sexually transmitted infections - Chlamydia rate per 100K population	179.0	193.0	↑	462.0	138.0
Teen births - female population, ages 15-19	70.0	54.0	↓	40.0	20.0
Clinical Care*					
	84	66	↓		
Uninsured adults - Percent of population under age 65 without health insurance	19.0%	19.0%	—	16.0%	11.0%
Primary care physicians - Number of population for every one primary care physician	5,696.0	8,277	↑	1439	1,045
Dentists - Number of population for every one dentist	N/A	8,181	—	1920	1,377.0
Mental health providers - Number of population for every one mental health provider	N/A	2,727	—	632	386.0
Preventable hospital stays - Hospitalization rate for ambulatory-care sensitive conditions per 1,000 Medicare enrollees	93.0	60.0	↓	65.0	41.0
Diabetic screening ^ - Percent of diabetic Medicare enrollees that receive HbA1c screening	83.0%	86.0%	↑	86.0%	90.0%
Mammography screening ^ - Percent of female Medicare enrollees that receive mammography screening	62.8%	61.3%	↓	62.2%	70.7%
Social & Economic Factors*					
	107	95	↓		
High school graduation ^ - Percent of ninth grade cohort that graduates in 4 years	72.0%	83.0%	↑	86.0%	N/A
Some college ^ - Percent of adults aged 25-44 years with some post-secondary education	43.4%	44.3%	↑	63.8%	71.0%
Unemployment - Percent of population age 16+ unemployed but seeking work	11.2%	7.2%	↓	6.5%	4.0%
Children in poverty - Percent of children under age 18 in poverty	29.0%	30.0%	↑	22.0%	13.0%
Income inequality - Ratio of household income at the 80th percentile to income at the 20th percentile	N/A	4.3	—	4.6	3.7
Children in single-parent households - Percent of children that live in household headed by single parent	33.0%	37.0%	↑	34.0%	20.0%
Social associations ^ - Number of membership associations per 10,000 population	N/A	11.3	—	11.9	22.0
Violent Crime Rate - Violent crime rate per 100,000 population (age-adjusted)	323.0	215.0	↓	452.0	59.0
Injury deaths - Number of deaths due to injury per 100,000 population	N/A	92.0	—	74.0	50.0
Physical Environment*					
	40	78	↑		
Air pollution-particulate matter days -Average daily measure of fine particulate matter in micrograms per cubic meter	N/A	10.7	—	10.2	9.5
Drinking Water Violations - Percentage of population exposed to water exceeding a violation limit during the past year	N/A	15.0%	—	4.0%	0.0%
Severe housing problems - Percentage of household with at least 1 of 4 housing problems: overcrowding, high housing costs or lack of kitchen or plumbing facilities	N/A	15.0%	—	14.0%	9.0%
Driving alone to work - Percentage of workforce that drives alone to work	N/A	76.0%	—	81.0%	71.0%
Long commute, driving alone - Among workers who commute in their car alone, the percentage that commute more than 30 minutes	N/A	34.0%	—	30.0%	15.0%
Note: N/A Indicates Missing Data					
* Rank out of 114 Missouri counties					
^ Opposite Indicator signifying that an increase is a positive outcome and a decrease is a negative.					
Source: Countyhealthrankings.org					

DENT COUNTY					
Phelps County Regional Medical Center Community					
County Health Rankings - Health Factors					
	Dent County 2012	Dent County 2015		Missouri 2015	Top US Performers 2015
Health Behaviors*					
	58	100	↑		
Adult smoking - Percent of adults that report smoking at least 100 cigarettes and that they currently smoke	N/A	35.0%	—	23.0%	14.0%
Adult obesity - Percent of adults that report a BMI >= 30	32.0%	35.0%	↑	31.0%	25.0%
Food environment index - Index of factors that contribute to a healthy food environment, 0 (worst) to 10 (best)	N/A	7.1	—	7.0	8.4
Physical inactivity - Percent of adults aged 20 and over reporting no leisure time physical activity	31.0%	34.0%	↑	26.0%	20.0%
Access to exercise opportunities - Percentage of population with adequate access to locations for physical activity	N/A	65.0%	—	77.0%	92.0%
Excessive drinking - Percent of adults that report excessive drinking in the past 30 days	9.0%	N/A	—	17.0%	10.0%
Alcohol-impaired driving deaths - % of motor vehicle crash deaths with alcohol involvement	N/A	16.0%	—	35.0%	14.0%
Sexually transmitted infections - Chlamydia rate per 100K population	158.0	185.0	↑	462.0	138.0
Teen births - female population, ages 15-19	56.0	52.0	↓	40.0	20.0
Clinical Care*					
	104	95	↓		
Uninsured adults - Percent of population under age 65 without health insurance	20.0%	20.0%	—	16.0%	11.0%
Primary care physicians - Ratio of population to primary care physicians	5,026.0	3,129.0	↓	1439	1,045
Dentists - Ratio of population to dentists	N/A	2,247.0	—	1920	1,377.0
Mental health providers - Ratio of population to mental health providers	N/A	1049	—	632	386.0
Preventable hospital stays - Hospitalization rate for ambulatory-care sensitive conditions per 1,000 Medicare enrollees	99.0	83.0	↓	65.0	41.0
Diabetic screening - Percent of diabetic Medicare enrollees that receive HbA1c screening	82.0%	83.0%	↑	86.0%	90.0%
Mammography screening - Percent of female Medicare enrollees that receive mammography screening	49.1%	50.7%	↑	62.2%	70.7%
Social & Economic Factors*					
	60	80	↑		
High school graduation - Percent of ninth grade cohort that graduates in 4 years	91.0%	93.0%	↑	86.0%	N/A
Some college - Percent of adults aged 25-44 years with some post-secondary education	44.9%	43.6%	↓	63.8%	71.0%
Unemployment - Percent of population age 16+ unemployed but seeking work	9.5%	6.4%	↓	6.5%	4.0%
Children in poverty - Percent of children under age 18 in poverty	30.0%	34.0%	↑	22.0%	13.0%
Income inequality - Ratio of household income at the 80th percentile to income at the 20th percentile	N/A	4.2	—	4.6	3.7
Children in single-parent households - Percent of children that live in household headed by single parent	21.0%	35.0%	↑	34.0%	20.0%
Social associations - Number of membership associations per 10,000 population	N/A	14.1	—	11.9	22.0
Violent Crime Rate - Violent crime rate per 100,000 population (age-adjusted)	189.0	198.0	↑	452.0	59.0
Injury deaths - Number of deaths due to injury per 100,000 population	N/A	119.0	—	74.0	50.0
Physical Environment*					
	77	81	↑		
Air pollution-particulate matter days -Average daily measure of fine particulate matter in micrograms per cubic meter	N/A	10.4	—	10.2	9.5
Drinking Water Violations - Percentage of population exposed to water exceeding a violation limit during the past year	N/A	3.0%	—	4.0%	0.0%
Severe housing problems - Percentage of household with at least 1 of 4 housing problems: overcrowding, high housing costs or lack of kitchen or plumbing facilities	N/A	13.0%	—	14.0%	9.0%
Driving alone to work - Percentage of the workforce that drives alone to work	N/A	86.0%	—	81.0%	71.0%
Long commute, driving alone - Among workers who commute in their car alone, the percentage that commute more than 30 minutes	N/A	34.0%	—	30.0%	15.0%
Note: N/A Indicates Missing Data					
* Rank out of 114 Missouri counties					
^ Opposite Indicator signifying that an increase is a positive outcome and a decrease is a negative.					
Source: Countyhealthrankings.org					

MARIES COUNTY Phelps County Regional Medical Center Community County Health Rankings - Health Factors					
	Maries County 2012	Maries County 2015	Missouri 2015	Top US Performers 2015	
Health Behaviors*	51	34	↓		
Adult smoking - Percent of adults that report smoking at least 100 cigarettes and that they currently smoke	N/A	N/A	—	23.0%	14.0%
Adult obesity - Percent of adults that report a BMI >= 30	31.0%	29.0%	↓	31.0%	25.0%
Food environment index - Index of factors that contribute to a healthy food environment, 0 (worst) to 10 (best)	N/A	8.1	—	7.0	8.4
Physical inactivity - Percent of adults aged 20 and over reporting no leisure time physical activity	31.0%	29.0%	↓	26.0%	20.0%
Access to exercise opportunities - Percentage of population with adequate access to locations for physical activity	N/A	18.0%	—	77.0%	92.0%
Excessive drinking - Percent of adults that report excessive drinking in the past 30 days	10.0%	N/A	—	17.0%	10.0%
Alcohol-impaired driving deaths - % of motor vehicle crash deaths with alcohol involvement	N/A	55.0%	—	35.0%	14.0%
Sexually transmitted infections - Chlamydia rate per 100K population	199.0	100.0	↓	462.0	138.0
Teen births - female population, ages 15-19	48.0	40.0	↓	40.0	20.0
Clinical Care*	99	79	↓		
Uninsured adults - Percent of population under age 65 without health insurance	19.0%	19.0%	—	16.0%	11.0%
Primary care physicians - Ratio of population to primary care physicians	8,924.0	9,014.0	↑	1439	1,045
Dentists - Ratio of population to dentists	N/A	3,006.0	—	1920	1,377.0
Mental health providers - Ratio of population to mental health providers	N/A	3006	—	632	386.0
Preventable hospital stays - Hospitalization rate for ambulatory-care sensitive conditions per 1,000 Medicare enrollees	86.0	70.0	↓	65.0	41.0
Diabetic screening - Percent of diabetic Medicare enrollees that receive HbA1c screening	77.0%	85.0%	↑	86.0%	90.0%
Mammography screening - Percent of female Medicare enrollees that receive mammography screening	58.7%	50.8%	↓	62.2%	70.7%
Social & Economic Factors*	34	43	↑		
High school graduation - Percent of ninth grade cohort that graduates in 4 years	88.0%	N/A	—	86.0%	N/A
Some college - Percent of adults aged 25-44 years with some post-secondary education	49.2%	47.1%	↓	63.8%	71.0%
Unemployment - Percent of population age 16+ unemployed but seeking work	7.9%	5.3%	↓	6.5%	4.0%
Children in poverty - Percent of children under age 18 in poverty	23.0%	27.0%	↑	22.0%	13.0%
Income inequality - Ratio of household income at the 80th percentile to income at the 20th percentile	N/A	4.1	—	4.6	3.7
Children in single-parent households - Percent of children that live in household headed by single parent	31.0%	27.0%	↓	34.0%	20.0%
Social associations - Number of membership associations per 10,000 population	N/A	16.6	—	11.9	22.0
Violent Crime Rate - Violent crime rate per 100,000 population (age-adjusted)	117.0	309.0	↑	452.0	59.0
Injury deaths - Number of deaths due to injury per 100,000 population	N/A	90.0	—	74.0	50.0
Physical Environment*	23	88	↑		
Air pollution-particulate matter days -Average daily measure of fine particulate matter in micrograms per cubic meter	N/A	10.2	—	10.2	9.5
Drinking Water Violations - Percentage of population exposed to water exceeding a violation limit during the past year	N/A	41.0%	—	4.0%	0.0%
Severe housing problems - Percentage of household with at least 1 of 4 housing problems: overcrowding, high housing costs or lack of kitchen or plumbing facilities	N/A	12.0%	—	14.0%	9.0%
Driving alone to work - Percentage of the workforce that drives alone to work	N/A	74.0%	—	81.0%	71.0%
Long commute, driving alone - Among workers who commute in their car alone, the percentage that commute more than 30 minutes	N/A	41.0%	—	30.0%	15.0%
Note: N/A Indicates Missing Data					
* Rank out of 114 Missouri counties					
^ Opposite Indicator signifying that an increase is a positive outcome and a decrease is a negative.					
Source: Countyhealthrankings.org					

PHELPS COUNTY Phelps County Regional Medical Center Community County Health Rankings - Health Factors					
	Phelps County 2012	Phelps County 2015		Missouri 2015	Top US Performers 2015
Health Behaviors*	44	40	↓		
Adult smoking - Percent of adults that report smoking at least 100 cigarettes and that they currently smoke	22.0%	27.0%	↑	23.0%	14.0%
Adult obesity - Percent of adults that report a BMI >= 30	31.0%	32.0%	↑	31.0%	25.0%
Food environment index - Index of factors that contribute to a healthy food environment, 0 (worst) to 10 (best)	N/A	6.9	—	7.0	8.4
Physical inactivity - Percent of adults aged 20 and over reporting no leisure time physical activity	28.0%	28.0%	—	26.0%	20.0%
Access to exercise opportunities - Percentage of population with adequate access to locations for physical activity	N/A	65.0%	—	77.0%	92.0%
Excessive drinking - Percent of adults that report excessive drinking in the past 30 days	19.0%	14.0%	↓	17.0%	10.0%
Alcohol-impaired driving deaths - % of motor vehicle crash deaths with alcohol involvement	N/A	28.0%	—	35.0%	14.0%
Sexually transmitted infections - Chlamydia rate per 100K population	244.0	242.0	↓	462.0	138.0
Teen births - female population, ages 15-19	48.0	40.0	↓	40.0	20.0
Clinical Care*	50	18	↓		
Uninsured adults - Percent of population under age 65 without health insurance	18.0%	18.0%	—	16.0%	11.0%
Primary care physicians - Ratio of population to primary care physicians	1,277.0	957.0	↓	1439	1,045
Dentists - Ratio of population to dentists	N/A	2,358.0	—	1920	1,377.0
Mental health providers - Ratio of population to mental health providers	N/A	393	—	632	386.0
Preventable hospital stays - Hospitalization rate for ambulatory-care sensitive conditions per 1,000 Medicare enrollees	82.0	59.0	↓	65.0	41.0
Diabetic screening - Percent of diabetic Medicare enrollees that receive HbA1c screening	80.0%	81.0%	↑	86.0%	90.0%
Mammography screening - Percent of female Medicare enrollees that receive mammography screening	58.0%	64.0%	↑	62.2%	70.7%
Social & Economic Factors*	20	37	↑		
High school graduation - Percent of ninth grade cohort that graduates in 4 years	87.0%	87.0%	—	86.0%	N/A
Some college - Percent of adults aged 25-44 years with some post-secondary education	61.8%	62.8%	↑	63.8%	71.0%
Unemployment - Percent of population age 16+ unemployed but seeking work	7.7%	5.9%	↓	6.5%	4.0%
Children in poverty - Percent of children under age 18 in poverty	22.0%	23.0%	↑	22.0%	13.0%
Income inequality - Ratio of household income at the 80th percentile to income at the 20th percentile	N/A	4.6	—	4.6	3.7
Children in single-parent households - Percent of children that live in household headed by single parent	27.0%	28.0%	↑	34.0%	20.0%
Social associations - Number of membership associations per 10,000 population	N/A	13.6	—	11.9	22.0
Violent Crime Rate - Violent crime rate per 100,000 population (age-adjusted)	352.0	316.0	↓	452.0	59.0
Injury deaths - Number of deaths due to injury per 100,000 population	N/A	84.0	—	74.0	50.0
Physical Environment*	36	45	↑		
Air pollution-particulate matter days -Average daily measure of fine particulate matter in micrograms per cubic meter	N/A	10.2	—	10.2	9.5
Drinking Water Violations - Percentage of population exposed to water exceeding a violation limit during the past year	N/A	1.0%	—	4.0%	0.0%
Severe housing problems - Percentage of household with at least 1 of 4 housing problems: overcrowding, high housing costs or lack of kitchen or plumbing facilities	N/A	14.0%	—	14.0%	9.0%
Driving alone to work - Percentage of the workforce that drives alone to work	N/A	79.0%	—	81.0%	71.0%
Long commute, driving alone - Among workers who commute in their car alone, the percentage that commute more than 30 minutes	N/A	18.0%	—	30.0%	15.0%

Note: N/A Indicates Missing Data

* Rank out of 114 Missouri counties

^ Opposite Indicator signifying that an increase is a positive outcome and a decrease is a negative.

Source: Countyhealthrankings.org

PULASKI COUNTY					
Phelps County Regional Medical Center Community					
County Health Rankings - Health Factors					
	Pulaski County 2012	Pulaski County 2015		Missouri 2015	Top US Performers 2015
Health Behaviors*	94	80	↓		
Adult smoking - Percent of adults that report smoking at least 100 cigarettes and that they currently smoke	25.0%	23.0%	↓	23.0%	14.0%
Adult obesity - Percent of adults that report a BMI >= 30	33.0%	34.0%	↑	31.0%	25.0%
Food environment index - Index of factors that contribute to a healthy food environment, 0 (worst) to 10 (best)	N/A	6.6	—	7.0	8.4
Physical inactivity - Percent of adults aged 20 and over reporting no leisure time physical activity	27.0%	27.0%	—	26.0%	20.0%
Access to exercise opportunities - Percentage of population with adequate access to locations for physical activity	N/A	62.0%	—	77.0%	92.0%
Excessive drinking - Percent of adults that report excessive drinking in the past 30 days	21.0%	22.0%	↑	17.0%	10.0%
Alcohol-impaired driving deaths - % of motor vehicle crash deaths with alcohol involvement	N/A	47.0%	—	35.0%	14.0%
Sexually transmitted infections - Chlamydia rate per 100K population	1,030.0	599.0	↓	462.0	138.0
Teen births - female population, ages 15-19	38.0	33.0	↓	40.0	20.0
Clinical Care*	93	28	↓		
Uninsured adults - Percent of population under age 65 without health insurance	17.0%	16.0%	↓	16.0%	11.0%
Primary care physicians - Ratio of population to primary care physicians	3,730.0	3,804.0	↑	1439	1,045
Dentists - Ratio of population to dentists	N/A	911.0	—	1920	1,377.0
Mental health providers - Ratio of population to mental health providers	N/A	611	—	632	386.0
Preventable hospital stays - Hospitalization rate for ambulatory-care sensitive conditions per 1,000 Medicare enrollees	93.0	50.0	↓	65.0	41.0
Diabetic screening - Percent of diabetic Medicare enrollees that receive HbA1c screening	81.0%	83.0%	↑	86.0%	90.0%
Mammography screening - Percent of female Medicare enrollees that receive mammography screening	45.9%	48.7%	↑	62.2%	70.7%
Social & Economic Factors*	13	45	↑		
High school graduation - Percent of ninth grade cohort that graduates in 4 years	91.0%	85.0%	↓	86.0%	N/A
Some college - Percent of adults aged 25-44 years with some post-secondary education	60.9%	66.4%	↑	63.8%	71.0%
Unemployment - Percent of population age 16+ unemployed but seeking work	7.9%	7.5%	↓	6.5%	4.0%
Children in poverty - Percent of children under age 18 in poverty	17.0%	17.0%	—	22.0%	13.0%
Income inequality - Ratio of household income at the 80th percentile to income at the 20th percentile	N/A	3.7	—	4.6	3.7
Children in single-parent households - Percent of children that live in household headed by single parent	24.0%	26.0%	↑	34.0%	20.0%
Social associations - Number of membership associations per 10,000 population	N/A	11.8	—	11.9	22.0
Violent Crime Rate - Violent crime rate per 100,000 population (age-adjusted)	447.0	319.0	↓	452.0	59.0
Injury deaths - Number of deaths due to injury per 100,000 population	N/A	71.0	—	74.0	50.0
Physical Environment*	27	1	↓		
Air pollution-particulate matter days -Average daily measure of fine particulate matter in micrograms per cubic meter	N/A	10.0	—	10.2	9.5
Drinking Water Violations - Percentage of population exposed to water exceeding a violation limit during the past year	N/A	5.0%	—	4.0%	0.0%
Severe housing problems - Percentage of household with at least 1 of 4 housing problems: overcrowding, high housing costs or lack of kitchen or plumbing facilities	N/A	12.0%	—	14.0%	9.0%
Driving alone to work - Percentage of the workforce that drives alone to work	N/A	55.0%	—	81.0%	71.0%
Long commute, driving alone - Among workers who commute in their car alone, the percentage that commute more than 30 minutes	N/A	18.0%	—	30.0%	15.0%

Note: N/A Indicates Missing Data

* Rank out of 114 Missouri counties

^ Opposite Indicator signifying that an increase is a positive outcome and a decrease is a negative.

Source: Countyhealthrankings.org

TEXAS COUNTY					
Phelps County Regional Medical Center Community					
County Health Rankings - Health Factors					
	Texas County 2012	Texas County 2015		Missouri 2015	Top US Performers 2015
Health Behaviors*	112	79	↓		
Adult smoking - Percent of adults that report smoking at least 100 cigarettes and that they currently smoke	31.0%	31.0%	—	23.0%	14.0%
Adult obesity - Percent of adults that report a BMI >= 30	35.0%	32.0%	↓	31.0%	25.0%
Food environment index - Index of factors that contribute to a healthy food environment, 0 (worst) to 10 (best)	N/A	7.0	—	7.0	8.4
Physical inactivity - Percent of adults aged 20 and over reporting no leisure time physical activity	33.0%	35.0%	↑	26.0%	20.0%
Access to exercise opportunities - Percentage of population with adequate access to locations for physical activity	N/A	46.0%	—	77.0%	92.0%
Excessive drinking - Percent of adults that report excessive drinking in the past 30 days	11.0%	11.0%	—	17.0%	10.0%
Alcohol-impaired driving deaths - % of motor vehicle crash deaths with alcohol involvement	N/A	17.0%	—	35.0%	14.0%
Sexually transmitted infections - Chlamydia rate per 100K population	167.0	233.0	↑	462.0	138.0
Teen births - female population, ages 15-19	60.0	56.0	↓	40.0	20.0
Clinical Care*	79	100	↑		
Uninsured adults - Percent of population under age 65 without health insurance	21.0%	21.0%	—	16.0%	11.0%
Primary care physicians - Ratio of population to primary care physicians	3,500.0	1,985.0	↓	1439	1,045
Dentists - Ratio of population to dentists	N/A	6,409.0	—	1920	1,377.0
Mental health providers - Ratio of population to mental health providers	N/A	2331	—	632	386.0
Preventable hospital stays - Hospitalization rate for ambulatory-care sensitive conditions per 1,000 Medicare enrollees	65.0	76.0	↑	65.0	41.0
Diabetic screening - Percent of diabetic Medicare enrollees that receive HbA1c screening	84.0%	80.0%	↓	86.0%	90.0%
Mammography screening - Percent of female Medicare enrollees that receive mammography screening	55.1%	52.2%	↓	62.2%	70.7%
Social & Economic Factors*	82	91	↑		
High school graduation - Percent of ninth grade cohort that graduates in 4 years	89.0%	87.0%	↓	86.0%	N/A
Some college - Percent of adults aged 25-44 years with some post-secondary education	39.6%	41.5%	↑	63.8%	71.0%
Unemployment - Percent of population age 16+ unemployed but seeking work	9.5%	6.8%	↓	6.5%	4.0%
Children in poverty - Percent of children under age 18 in poverty	33.0%	38.0%	↑	22.0%	13.0%
Income inequality - Ratio of household income at the 80th percentile to income at the 20th percentile	N/A	4.1	—	4.6	3.7
Children in single-parent households - Percent of children that live in household headed by single parent	31.0%	32.0%	↑	34.0%	20.0%
Social associations - Number of membership associations per 10,000 population	N/A	13.2	—	11.9	22.0
Violent Crime Rate - Violent crime rate per 100,000 population (age-adjusted)	149.0	81.0	↓	452.0	59.0
Injury deaths - Number of deaths due to injury per 100,000 population	N/A	89.0	—	74.0	50.0
Physical Environment*	47	70	↑		
Air pollution-particulate matter days -Average daily measure of fine particulate matter in micrograms per cubic meter	N/A	10.3	—	10.2	9.5
Drinking Water Violations - Percentage of population exposed to water exceeding a violation limit during the past year	N/A	8.0%	—	4.0%	0.0%
Severe housing problems - Percentage of household with at least 1 of 4 housing problems: overcrowding, high housing costs or lack of kitchen or plumbing facilities	N/A	13.0%	—	14.0%	9.0%
Driving alone to work - Percentage of the workforce that drives alone to work	N/A	82.0%	—	81.0%	71.0%
Long commute, driving alone - Among workers who commute in their car alone, the percentage that commute more than 30 minutes	N/A	34.0%	—	30.0%	15.0%

Note: N/A Indicates Missing Data

* Rank out of 114 Missouri counties

^ Opposite Indicator signifying that an increase is a positive outcome and a decrease is a negative.

Source: Countyhealthrankings.org